

Xc2/392 PHONOGRAPHIC CARDS - "ADMIRAL CIGARETTES" (A). This grouping covers the cards under USA/392-394 in the American Catalog. All are brand issues, inscribed "Admiral Cigarettes" at base of front. Small size, very variable. National Cigarette and Tobacco Co. Set N22-3.

1. 1st Set. Half-tones in shades of black, dark green, brown or maroon, on white or yellow-cream board, see Figs. Xc2/392-1A and 1B. Although printed from photos, this set does not consist of real photos as in the 2nd set.

"Admiral Cigarettes" at base in one line measuring about 21 m/m, 25 m/m or 29 m/m long. Captions in small capitals, see Fig. Xc2/392-1A, or in upper and lower case letters, see Fig. Xc2/392-1B. Backs (a) plain (b) printed horizontally in black "Very Wild and Pure - The Admiral Cigarette contains only the most costly blend of Turkish and Virginia Tobacco, and is the most popular Cigarette on the market".
Actresses, 467 known.

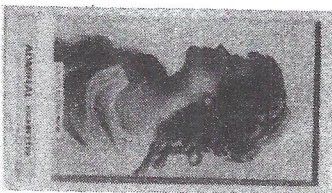


Fig. Xc2/392-1A



Fig. Xc2/392-1B

1. Pauline L'Allemard (H & S, looking R, hat, hair loose down back)
2. Viola Allen (W, L/hand at chin, R/arm across waist)
3. do. (3/4 elbows on table, hands at chin)
4. Mlle Allette (3/4, standing looking R, hands on hips, hat)
5. Miss Alford (3/4, leaning back in chair looking R, R/hand at head)
- 6.illian Ames (F, standing I/profile, L/hand by I/shoulder)
7. Blanche Anderson (F, near I/profile, arms folded, standing)
8. Marie Anderson (near F, standing R looking down L, R/hand held out thigh high)
9. Mary Anderson (H & S, facing R looking at camera, hand across hair)
10. Pearl Andrews (F, standing I/profile, hands at back)
11. Ollie Archmere (F, seated on cushion by wall, playing banjo)
12. do. (F, standing looking L, R/hand on hip, L/hand above head)
13. Camille D'Arville (B, looking slightly to L above camera)
14. do. (F, standing by tree looking front, R/hand on hip)
15. do. (F, standing by shrub looking L, rapier in R/hand)
16. do. (F, standing looking up R, cloak, pantaloon)
17. Saddle Berner (F, standing, R/hand on huge poppy above head, L/arm at side)
18. Josephine Barlett (F, leaning with L/hand on chair back, looking front)
19. Pauline Batchelder (F, seated on wall, R/hand on L/leg)
20. Jennie Beavers (3/4, standing looking L, hat, arms at sides)
21. Miss Bemis (F, seated looking L, R/arm across waist)
22. Helen Bertram (F, standing by wall, L/hand head high, R/hand on hip)
23. Mabelle Borton (H & S, looking at camera, hands by chin, hat)
24. do. (H & S, looking R, bare head, hair up with ornament at top)
25. do. (H & S, looking R, bare head, hair loose over shoulders)
26. do. (H & S, near R/profile, wide-brimmed hat, hair round neck)
27. do. (3/4, standing looking L, R/hand on hip, L/arm at side, bare head)
28. do. (3/4, seated looking at camera, R/hand on lap, hat)
29. do. (F, standing facing L looking R, hat, L/hand raising skirt)
30. do. (F, standing looking at camera, hands adjusting wrap round neck)
31. do. (F, standing leaning back, L/hand off picture above head)
32. do. (F, standing looking R, feather duster in R/hand at side)
33. Hope Booth (3/4, by pillar, L/arm across head - Fig. Xc2/392-1B)
34. Louise Boudet (F, standing looking at camera, L/arm at waist, hat)
35. Arba Bowen (H & S, side view I/profile, R/hand at chin, bare head)
36. Minnie Bowen (B, looking R, bare head, necklace and pendant)
37. do. (3/4, standing I/profile, hat, R/arm at side)
39. do. (F, seated looking L, hands on lap)

Xc2/392 PHONOGRAPHIC CARDS - "ADMIRAL CIGARETTES" (continued)

1. 1st Set. Half-tones (continued)

39. Anna Boyd (F, standing looking L, hands at back, bare head)
40. do. (F, R/knee on chair looking L, R/hand at head)
41. do. (F, mortar board, sword in R/hand, L/hand head high)
42. do. (F, mortar board, about to draw sword from scabbard)
- X43. Helen Budd (F, seated looking at camera, hands on thighs, hat)
44. do. (F, seated looking at camera, R/hand on hip, stick in L/hand)
45. do. (H & S, looking R, bare head)
46. Irene Burbank (F, standing looking R, rapier in R/hand, L/hand on hip)
47. Laura E. Burr (3/4, standing looking R, hands on hips)
48. Miss Burris (F, standing against small pillar, hands on hips)
49. Miss Burton (F, standing looking L, hands together below waist)
50. do. (F, standing facing R looking round to L, hands below waist)
- X51. Lottie Burton (F, standing looking up R, hands raising short skirt)
52. Jessie Butler (3/4, standing looking L, L/hand at head, tall bonnet)
53. Julia Calhoun (F, standing near I/profile looking up at R/hand)
54. Emma Calve (H & S, looking downwards, veiling over head)
55. Beatrice Cameron (F, standing looking upwards, hands above head)
56. do. (F, standing I/profile, hat tied with dark ribbon below chin)
57. Nellie Campbell (H & S, R/profile, hat tied with dark ribbon below chin)
58. do. (H & S, back view, R/profile, bare head)
59. Bessie Carl (W, looking down R, hands clasped at chin, bare head)
60. Kate Gastleton (3/4, back view, I/profile, bare head)
61. Georgia Cayvan (H & S, L/profile, bare head and throat)
62. do. (H & S, I/profile, hat and veil, bow tie and collar)
63. do. (H & S, looking L, bare head, imitation flowers R/nose corner)
64. Georgie Cayvan (near F, looking R, L/arm at side, R/hand off picture)
- X65. Ada Chamberlain (F, standing by curtain, crown, arms at sides)
66. Emma Chambers (F, standing looking L, hands bust high)
67. Winnie Church (F, standing looking at camera, L/arm round bundle of reeds)
68. do. (F, standing head tilted back, hands back of head)
69. Florence Clark (H & S, looking at camera, bare head)
70. do. (F, seated I/profile, R/hand at chin)
71. Miss M. Cleary (3/4, standing looking R, hands together below waist)
72. Emma Clemens (F, standing looking L, R/arm at side, L/hand on hip)
73. do. (F, seated on stairs, L/hand on R/knee)
74. Bessie Cleveland (F, standing I/profile looking down, R/hand at chin, L/hand on hip)
75. do. (F, standing I/profile looking level, L/hand at chin)
76. do. (F, standing looking L, hands on hips)
77. do. (F, standing looking at camera, hands on hips)
78. do. (F, standing near I/profile, axe in R/hand, L/hand at back)
79. do. (F, standing looking L, R/arm at side, L/hand waist high)
- X80. Marie Clifton (3/4, standing looking L, hands bust to shoulder high holding scarf)
81. do. (F, seated by sea I/profile looking down, R/arm across bosom)
82. Bessie Clinton (3/4, looking down/R, hands at neck)
- X83. M. Cole (F, standing looking front holding long stick across body)
84. Citta Collins (B, L/profile, stars in headpiece and on dress)
85. do. (3/4, looking L, arms folded)
86. do. (3/4, looking at camera, arms folded)
87. do. (F, looking L, R/hand head high, L/arm across waist)
88. do. (F, I/profile, R/hand head high, L/hand held out waist high)
89. do. (F, looking R, hands on hips)
90. do. (F, looking at camera, hands in muff held to chin)
91. do. (3/4, looking L, same costume, small dog in R/arm)
92. do. (3/4, looking down/L, hands together below waist, hat)
93. do. (3/4, seated looking down/L, hands on lap, bare head)
94. do. (F, standing looking front, R/arm at side, L/hand on hip)

- 1. 1st Set. Halthomes (continued)
- 95. B. Daly (F, seated leaning back, R/foot over L/knee, L/hand on waist)
- 96. D. Dammond (F, standing by wall, arms folded)
- 97. Miss Daniels (F, standing in Viking boat L/hand shading eyes, rod in R/hand)
- 98. Cordie Davege (H & S, back view L/profile looking level, dark background top/R)
- 99. do. (H & S, back view L/profile looking up, light background)
- 100. do. (H & S, front view looking at camera)
- 101. do. (B, front view near L/profile)
- 102. do. (F, leaning against chair, hands clasped at bosom)
- 103. do. (F, standing L/profile, R/arm at side, L/hand at back)
- 104. do. (F, lying on ground looking at camera)
- 105. do. (F, seated looking at camera, hands on L/leg over R/knee)
- 106. Pamme Davenport (H & S, L/profile, hat, no hands visible)
- 107. do. (F, leaning to L, profile, R/hand at chin, L/hand off picture)
- 108. Jennie Bartlett Davis (H & S, R/profile looking down, bare head, necklace)
- 109. do. (F, standing looking up/R, L/arm visible by waist)
- 110. do. (F, standing looking up, handbag in L/hand below waist)
- 111. do. (F, standing R/profile, R/hand at head)
- 112. Kate Davis (F, standing looking L, hands chin high)
- 113. Marie Louise Day (F, standing looking at camera, bare head, R/arm at side) Marie De Wolf - see under Wolf
- 114. Louise Dempsey (F, standing looking L, stick in R/arm)
- 115. do. (almost F, R/knee on chair, looking round to R)
- 116. do. (F, standing looking L, hat, hands on hips)
- 117. do. (F, standing looking at camera, hat, hands on hips)
- 118. do. (F, standing looking L, bare head, hat in R/hand at side)
- 119. do. (F, standing looking L, bare head, hands at back)
- 120. Georgie Demuth (F, seated looking L, legs crossed)
- 121. do. (F, standing near L/profile, arms extended horizontally)
- 122. do. (F, standing looking at camera, hands head high holding skirt)
- 123. L. Demhurst (F, seated, R/hand at hat, rifle in L/hand across lap)
- 124. May Dickenson (F, looking R, R/hand at head - No. 13, Fig. 36-4, FBI8)
- 125. Miss Douglass (F, standing L/profile, L/hand on L/thigh, hat)
- 126. Laura Dupont (almost F, seated in swing, L/leg over R/knee)
- 127. Virginia Earl (F, standing R/profile looking at flower in L/hand)
- 128. do. (F, standing looking at camera, spiked headpiece, L/hand at waist)
- 129. do. (F, resting on arm of stool looking at camera, spiked headpiece)
- 130. Louise Elasing (F, light tights, R/hand back of head, L/hand extended forward)
- 131. do. (F, light tights, R/hand chest high, L/hand on hip)
- 132. do. (F, dark tights, R/hand about to draw sword)
- 133. do. (F, dark tights, R/hand on hip, L/arm at side)
- 134. do. (F, shoes laced to knees, looking at camera, arms folded)
- 135. Ellice (F, standing looking L, R/hand head high)
- 136. Minnie Ellis (F, standing looking L, R/hand shading eyes, L/hand at neck)
- 137. Alice Evans (B, R/profile looking down, L/hand across chest)
- 138. do. (B, R/profile looking down, no hands visible)
- 139. do. (B, looking at camera, hands with fingers entwined below chin)
- 140. I. Parvane (F, leaning against pillar, L/hand on hip)
- 141. Leila Farrell (F, standing glancing R, finger of R/hand at chin)
- 142. Edith Pasette (near F, seated along bed looking at mirror in R/hand)
- 143. Helen Ferrer (W, looking L, bare head, R/arm half off picture across waist)
- 144. do. (F, looking at camera, R/hand at hat, paper in L/hand)
- 145. Finlason (F, smiling at camera, R/hand on hip)
- 146. Bertie Flesch (F, standing head tilted/R, R/hand neck high, L/hand by hip)
- 147. do. (F, seated looking at camera, hands neck high)
- 148. Ida Fitzhugh (F, standing L/profile, R/hand neck high, L/hand at back)
- 149. Miss Fitzhugh (F, seated L/profile, bare head)
- 150. Ragnie Fougere (F, standing looking at camera, hands at back)
- 151. do. (F, standing looking R, R/hand head high)

- 1. 1st Set. Halthomes (continued)
- 152. Della Fox (H & S, looking up/L, bare head)
- 153. do. (near F, seated looking R, R/hand at head)
- 154. do. (F, standing looking at camera, open parasol over R/shoulder)
- 155. do. (F, standing looking at camera, open fan in R/hand back of head)
- 156. do. (F, standing looking at camera, stick in R/hand over R/shoulder)
- 157. Nellie Fox (F, standing looking L, R/hand on hip, L/hand at L/thigh)
- 158. do. (F, standing L/profile looking at R/hand head high, L/hand on hip)
- 159. Lena French (F, standing looking R, hands on hips)
- 160. do. (F, seated looking L, hands on R/leg over L/knee)
- 161. do. (F, seated looking R, L/arm across waist, R/hand on R/thigh)
- 162. Carrie Fulton (F, standing looking L, hands on hips, multi-strand necklace)
- 163. do. (F, standing looking at camera, hands on hips, no necklace)
- 164. M. Galindan (F, standing R/hand on curtain looking L, L/arm at side)
- 165. Jessie Gardner (almost F, seated looking at camera, R/foot mostly off picture)
- 166. Leone Gerette (almost F, seated looking R, hands on R/leg over L/knee)
- 167. Sylvia Gerrish (F, standing looking front, flower spray in R/hand above head)
- 168. Miss H. Gilmore (F, seated looking R, L/leg over R/knee)
- 169. Inlu Glaser (near F, standing, L/hand at chin, R/hand on chair back)
- 170. Anna Gregory (F, R/foot on rock looking L, hands on hips)
- 171. do. (F, standing looking R, hands at neck)
- 172. do. (F, seated on rock, looking R, hands at back)
- 173. do. (F, seated on rock, R/hand at neck, L/arm across waist)
- 174. Mabel Guyer (F, L/profile looking down at arms held ready to dive)
- 175. do. (F, standing holding tennis racquet back of neck, looking front)
- 176. Jane Hading (F, near R/profile, hands below waist)
- 177. Jessie Hall (F, seated looking R, R/hand on R/thigh, L/hand at back)
- 178. Josephine Hall (H & S, L/profile, hat, high-necked costume)
- 179. Emma Hardy (F, leaning against pillar looking R, arms folded)
- 180. Adelia Hart (F, seated looking at camera, L/hand head high, R/hand on hip)
- 181. Jennie Hart (F, standing looking down, R/hand across waist, hat)
- 182. do. (F, looking up L, wings, holding long stick by beam head)
- 183. Battle Harvey (F, walking to L by foliage, L/profile, L/hand at head)
- 184. May Harvey (F, leaning to L, R/hand above head, L/hand extended at back)
- 185. do. (F, standing erect L/profile, hands on hips)
- 186. Caroline Hill (F, behind gate, L/profile smelling rose)
- 187. Nellie Hiss (F, leaning back with arms on wall, L/profile, hat)
- 188. Pollie Holmes (F, standing looking up/L, R/hand above head)
- 189. do. (F, standing looking L, R/hand and R/knee on tilted chair)
- 190. do. (F, standing looking at camera, small rug in hands bust high)
- 191. Holmes & Robnett (F, two girls seated, one on R in dark tights)
- 192. Nellie Homerom (near F, standing looking R, arms folded)
- 193. May Howard (F, seated looking L, small stick in R/hand on R/thigh)
- 194. Barbara Huntley (B, 3-face to R, two stars on headpiece, necklace)
- 195. do. (B, L/profile, bare head, no necklace)
- 196. Cad Huntley (F, standing looking L, top hat, cigarette in R/hand chin high)
- 197. do. (F, standing looking L, playing banjo)
- 198. Gattie Huntley (F, standing looking L, playing banjo)
- 199. Martha Imler (F, ball at pose on tip-toes, hands on skirt)
- 200. Isabelle Irving (H & S, looking L, bare head, curls on R/shoulder)
- 201. Norrie Jackson (H & S, looking L, hat with many sprigs of flowers)
- 202. Jarbeau (F, standing looking R, hands on hips)
- 203. do. (F, standing L/profile, L/hand chin high)
- 204. Verona Jarbeau (F, seated looking at camera, R/hand head high)
- 205. do. (F, standing looking up at feather fan in R/hand above head)
- 206. do. (F, seated looking L, L/hand at head, R/hand on hip)
- 207. do. (F, leaning against with L/hand on pillar, R/hand head high)
- 208. do. (F, standing upright on plinth looking front, R/hand head high)
- 209. do. (F, standing on plinth leaning forward, L/hand chin high)
- 210. do. (F, standing looking up at R/hand above head, L/hand on hip)

Starling

at feet on chair

1. 1st Set. Half-tones (continued)

211. Syble Johnson (F, seated L/profile, hands on lap)
 212. do. (F, standing looking L, hands held out about waist high)
 213. Miss Jones (B, back view L/profile, two strands in hair)
 214. Jennie Joyce (F, standing looking L, L/hand at neck, R/hand by hip)
 215. Moe Juran (F, standing near L/profile, holding ends of skipping rope)
 216. do. (F, standing near L/profile, holding out ends of fur wrap)
 217. Lila Kavanaugh (F, standing leaning back looking at camera, L/arm at side)
 218. do. (F, standing looking at flower held up head high in R/hand)
 219. Lella Kavanaugh (H & S, looking R, headpiece, necklace)
 220. Lyla Kavanaugh (F, standing L/profile, R/hand extended, L/hand on hip)
 221. Gertrude Kelt (F, standing looking L, R/hand shading eyes, L/hand at back)
 222. do. (F, standing looking L, hands at back)
 223. do. (F, seated looking L, R/hand on R/thigh)
 224. Mary Koepfing (F, standing looking L, R/hand on hip, L/hand on curtain)
 225. Mamie La Wall - see under Wall
 226. Nellie Lackell (F, standing looking L, holding shield at waist)
 227. Sadie Lane (F, seated looking L, R/hand at head, L/arm at side)
 228. do. (F, standing looking L, holding out ends of skirt)
 229. Madge Larner (F, standing looking L, R/hand on hip, L/arm at side)
 230. Helen Lamry (F, standing looking L, hands at back)
 231. Bertina Leslie (H & S, looking L head tilted to R, hat)
 232. Miss Lester (F, leaning against rock looking at camera, playing banjo)
 233. Annie Lewis (H & S, looking R, two-strand necklace)
 234. Zoffie Gilbury Lewis (F, seated looking R, hands on seat arms)
 235. Liddle Lind (F, standing L/profile, R/hand shading eyes, L/hand at back)
 236. Liddle Lind (F, standing looking L, hat, hands bust high)
 237. do. (F, R/knee on chair, looking R, R/hand at cheek)
 238. Linder, Wall & Fox (H & S, three girls with heads together)
 239. Anna Livingston (F, standing, L/hand on hip, racquet in R/hand at side)
 240. Miss Lotka (F, seated, top hat, L/hand on L/thigh, R/hand bust high)
 241. B.J. Lovejoy (F, L/profile, tights, hands on hips)
 242. do. (F, L/profile, military tunic, L/hand on hip, R/hand at back)
 243. Nettie Lyford (H & S, looking L, necklace, cap on back of head)
 244. Bessie Lynch (F, standing looking at camera, hands at hat)
 245. do. (F, standing looking L, holding ends of coil of rope)
 246. Edna Meacari (F, walking to R looking L, wings, hands neck high)
 247. do. (F, about to walk to R looking L, vase in L/hand by L/shoulder)
 248. Lillian Maehl (F, standing by tree L/profile looking at R/hand above head)
 249. do. (F, standing looking L, R/hand head high, L/hand extended)
 250. Miss Macey (F, seated looking L, R/arm across waist)
 251. Anna Martell (F, standing by wall, R/hand on tambourine, L/hand on hip)
 252. Mlle Marzando (F, ballet pose L/profile, L/arm bent, R/hand not visible)
 253. do. (F, ballet pose looking L, L/hand on head, R/hand on dress)
 254. Lena Maxwell (F, R/foot on stone step, L/foot on rock)
 255. Laura Maxwell (F, standing looking L, hands on hips)
 256. do. (F, standing looking at camera, arms folded)
 257. Eleanor Mayo (H & S, L/profile, bare head)
 258. Ada McDonald (F, seated looking R, R/arm across lap, L/hand bust high)
 259. do. (F, seated leaning to R on elbows on ledge looking down/R)
 260. do. (F, standing on tip-toes glancing L, hands at head)
 261. do. (F, standing by wall, R/hand at head, L/hand on hip)
 262. Ada McWade (F, leaning back L/profile looking up, R/hand at chin)
 263. Alice Medmar (F, standing looking L, hands at back)
 264. Fern Melrose (F, standing leaning to R looking at camera, L/hand at chin)
 265. Letta Merridith (almost F, looking L, holding riding crop across waist)
 266. do. (F, standing looking L, arms folded)
 267. do. (F, leaning against chair looking L, R/arm at side)
 268. do. (F, seated L/profile, looking at R/hand head high)
 269. do. (F, seated L/profile, R/arm across seat back, L/hand on hip)

1. 1st Set. Half-tones (continued)

270. May Merrick (F, back view L/profile, arms waist high)
 271. Anne Merridith (F, standing looking L, R/hand on hip, L/hand on scabbard)
 272. do. (F, standing L/profile, R/hand not visible, L/hand on scabbard)
 273. Mary Mills (H & S, looking at camera, bare head - No. 4, Fig. 36-4, RB16)
 274. Kit Mitchell (H & S, L/profile, bare head, necklace with pendant)
 275. Modjeska (W, seated looking at camera, hands at chin)
 276. do. (F, standing looking L, hands in muff at chin)
 277. Marrie Morita (F, seated on table, hands at L/knee over R/knee)
 278. Amelia Montain (F, standing by wall glancing L, wings, R/hand on hip)
 279. do. (F, ballet pose looking L, hands on skirt)
 280. Decima Moore (F, standing looking L, R/hand at side on white sash across hips)
 281. do. (F, standing looking front, closed parasol in L/hand over L/shoulder)
 282. Jessie Moran (F, standing near L/profile looking upwards, R/hand on pillar)
 283. do. (F, standing looking L, stick in R/hand, L/hand on hip)
 284. Clarence Moullder (F, standing winking R/eye, wings, L/hand by L/shoulder)
 285. Miss Murock (F, standing head tilted L, R/hand at chin, L/arm at side)
 286. Edith Myrville (F, standing looking R above camera, hands together below chin)
 287. do. (F, standing looking L above camera, leaning with hands on screen)
 288. Helen Nadine (H & S, profile to L, hat)
 289. do. (B, looking at camera, hair with "bun" and star ornament)
 290. do. (B, looking to L, hair with "bun" and star ornament)
 291. do. (B, looking up R, hair parted in centre, no "bun" or ornament)
 292. Miss Nicholas (F, on floor doing "splits" hands above head - horizontal format)
 293. Anne O'Neill (H & S, looking L, hat)
 294. do. (H & S, L/profile, hat)
 295. do. (F, looking L, hands on hips)
 296. do. (F, looking R, R/hand at hat)
 297. do. (F, standing looking L, hands on hips)
 298. Elite Proctor Otis (F, looking L, L/hand at back of hip, R/hand by waist)
 299. do. (F, L/profile, L/hand with wrist folded on hip, R/hand by waist)
 300. Nellie Page (F, standing looking L, L/hand above head on curtain, R/hand on hip)
 301. do. (F, standing on plinth looking L, L/hand on hip, R/hand by R/thigh)
 302. Minnie Palmer (F, standing looking L, hands bust high, hat)
 303. Baby Parker (F, standing looking at camera, L/hand holding up objects in skirt)
 304. Lillie Parmean (F, standing looking L, R/hand on pillar, L/hand on hip)
 305. do. (F, standing looking L, R/hand chin high, L/hand hip high)
 306. Vivian Pattee (F, standing looking L, L/hand at hat, R/hand on hip)
 307. Lizzy Payne (F, standing looking L, arms folded)
 308. Irene Penny (F, standing looking at camera, hands at sides on check dress)
 309. do. (F, seated looking L, hands at R/knee over L/leg)
 310. Lillie Post-Worton (F, standing looking at camera, holding open window curtains)
 311. Mrs. James Brown Potter (F, looking at camera, rapier across thighs)
 312. Miss Prayer (F, standing by pillar looking L, playing banjo)
 313. do. (F, walking to R looking front, banjo in R/hand, L/hand on pillar)
 314. A. Pringle (H & S, R/profile looking down, bare head)
 315. Adelaide Prince (H & S, R/profile looking level, bare head)
 316. do. (H & S, looking to L of camera, hat, high-necked dress)
 317. Clara Qualitz (F, seated on wall looking up L, R/hand above head)
 318. do. (F, seated on wall looking up R, R/hand at chin)
 319. Madame Qualitz (F, standing back view near L/profile, hands above head)
 320. Fannie Quick (F, standing looking at camera, pall in hands by L/thigh)
 321. Jessle Quintling (F, standing L/profile, hat, hands in muff at waist)
 322. Sallie Randall (F, seated playing banjo - No. 16, Fig. 36-4, RB18)
 323. Charlotte Ray (B, L/profile, ornament in hair, open throat)
 324. do. (F, seated looking front, R/arm on St. Bernard dog)
 325. Frankie Raymond (F, seated on wall, wings, looking at L/hand on R/arm)
 326. M.E. Rice (F, standing L/profile looking up at rope strand, R/hand at head)
 327. do. (F, standing looking front, hands on hips)

Xc2/392 PHOTOGRAPHIC CARDS - "ADMIRAL CIGARETTES" (continued)

1. 1st Set. Half-tones (continued)

328. Grace Richardson (F, standing looking L, arms folded)
 329. Ella Ringquest (H & S, looking up L, white fur head covering)
 330. Della Roach (F, standing behind balustrade, hat, L/hand by L/shoulder)
 331. do. (F, standing, L/hand on balustrade, bare head, R/hand at back)
 332. Minnie Roberts (B, looking R, bare head, necklace with heart pendant)
 333. Leona Roberts (F, standing looking L, hands on hips)
 334. Effie Roberts (F, R/foot on chair, R/hand at head, L/hand on hip)
 335. do. (F, standing looking L, hands on hips)
 336. do. (F, seated looking above camera, arms folded)
 337. B. Rodney (F, standing looking at camera, R/arm on wall, L/hand on hip)
 338. Harbette Rodney (F, standing looking upwards, R/hand back of head)
 339. do. (F, standing looking upwards, holding cane across waist)
 340. Louise Royer (F, standing on deck looking through telescope)
 341. Little Ruby (F, leaning with L/arm on pillar, hands clasped on pillar)
 342. do. (F, standing by tree looking R, R/hand above head)
 343. do. (F, seated, looking R, playing banjo)
 344. Pearl La Rue (F, standing looking at camera, holding rapier across thighs)
 345. Miss Isadore Rush (H & S, looking down R, bare head)
 346. do. (H & S, looking at camera, hat, fur coat)
 347. do. (F, looking R, same hat and fur coat)
 348. do. (F, standing, looking down R, R/hand shoulder high)
 349. F. Russell (F, standing looking L, R/hand on hip, L/hand on curtain)
 350. William Russell (H & S, looking at camera, hat, high-necked dress)
 351. Ruth (almost F, standing looking at camera, R/hand on hip)
 352. Miss Ryan (F, seated on ledge leaning to R, hands on ledge)
 353. do. (F, seated leaning to L, R/hand at head)
 354. Clara Van Ryan - see under Van
 355. Mile St. Clair (almost F, looking L, L/hand at head, R/hand at back)
 356. do. (F, looking L, hands together below waist)
 357. do. (F, looking at camera, hands at head)
 358. Clara St. Maur (almost F, seated looking at camera, R/hand on R/thigh)
 359. Countess Sander (F, seated looking L, L/hand at head, R/hand at hip)
 360. do. (F, R/foot on stool, cigarette in R/hand, L/hand on hip)
 361. S. Sandford (F, standing aiming bow and arrow to R)
 362. do. (F, standing looking up/L, R/hand above head, L/hand at chin)
 363. do. (F, standing glancing L, hands at hat)
 364. Carrie Scott (F, standing L/foot on rug, cigarette in L/hand neck high)
 365. do. (F, standing, hands on hips)
 366. do. (F, reclining - horizontal format)
 367. Mile Selma (B, L/profile, bare head)
 368. Carlotta Sevilla (F, standing looking L, hands at hips)
 369. Ruth Stetson (F, standing looking L, R/hand at hat, L/hand on Lion statue)
 370. Miss Stewart (F, seated looking at camera, hands on lap)
 371. Josie Stuart (almost F, standing looking L, arms folded)
 372. do. (F, R/knee on chair, looking L, L/arm at side)
 373. Anna Summerville (F, seated, hands on lap)
 374. do. (F, standing, hands by L/shoulder holding long "wand")
 375. do. (F, standing, hands together below waist)
 376. Annie Summerville (F, standing on ship's deck looking L, arms folded)
 377. do. (F, standing R/profile, arms extended diagonally)
 378. Annie Sutherland (F, standing looking R, L/hand at back)
 379. do. (F, seated looking L, R/hand on hip, L/hand by L/thigh)
 380. Grace Tabor (B, looking down R eyes closed, necklace with pendant)
 381. do. (F, standing looking at camera, holding rapier across thighs)
 382. do. (F, standing L/profile by archway, long stick in L/hand)
 383. Fannie Tannahill (F, seated glancing L, hands waist high, dark background)
 384. do. (F, seated by palm in pot, L/hand behind L/thigh)
 385. do. (F, seated by palm in pot, L/hand on L/thigh)

Xc2/392 PHOTOGRAPHIC CARDS - "ADMIRAL CIGARETTES" (continued)

1. 1st Set. Half-tones (continued)

386. Fannie Tannahill (F, standing looking L, ear in L/hand, R/hand by R/thigh)
 387. do. (F, standing on seashore looking front, hands back of head)
 388. Eteline Terriss (H & S, looking at camera, white hat)
 389. do. (H & S, looking R, holding cat to chest, bare head)
 390. Kate Meyer (H & S looking R, bare head, necklace with pendant)
 391. B. Tomlins (F, leaning against table looking at camera, legs crossed)
 392. do. (F, leaning against with L/hand on pillar, looking at camera)
 393. do. (F, standing near L/profile looking at object in R/hand)
 394. Troje (F, standing looking at camera, R/hand bust high, L/arm at side)
 395. Sarah Truxer (W, looking up L, L/hand across bosom, R/hand shoulder high)
 396. Celole Trynor (B, L/profile, bare head - Figs. Xc2/392-1a)
 397. do. (F, standing L/profile, hands at back not visible)
 398. do. (F, standing on plinth, L/hand at back, R/arm extended)
 399. Jessie Trynor (B, L/profile looking down, headpiece)
 400. do. (W, R/hand above head, L/arm across bosom)
 401. do. (F, standing hands above head holding ends of wrap)
 402. Bessie Tyree (B, R/profile, bare head)
 403. Kate Uart (near F, standing looking L, arms folded)
 404. Isabelle Uguhart (H & S, L/profile looking up, bare head, triicorn hat)
 405. Mile. Valti (almost F, standing, hands extended head high, L/knee)
 406. do. (F, seated, R/hand on hip, L/hand by L/knee)
 407. Clara Van Ryan (F, standing by tree, R/hand above head)
 408. Lillie Vane (F, standing facing L looking round at camera, hands at chin)
 409. Therese Vaughn (F, seated looking at camera, playing banjo)
 410. Silance Veyse (H & S, looking at camera, wide-brimmed dark hat)
 411. do. (F, standing behind with elbows on gate, hands at chin)
 412. do. (F, standing by urn on plinth, L/hand on hip)
 413. do. (F, standing looking R, R/hand raising skirt, L/hand on hip)
 414. do. (F, seated looking at camera, R/hand at hat, L/hand on lap)
 415. Topsy Venn (F, standing looking R, R/hand at hat, L/hand on hip)
 416. Lillie Vernon (F, leaning back on stone bench, R/hand behind head)
 417. do. (F, seated upright on stone bench, R/hand on R/thigh, L/hand on hip)
 418. Irene Verona (H & S, looking above camera, bare head)
 419. J. Villars (F, standing by archway looking L, hands on hips)
 420. Wend Waldmer (F, seated L/profile, R/hand head high, L/hand by hip)
 421. do. (F, R/foot on step L/profile, tambourine in R/hand head high)
 422. Mamie La Wall (F, standing looking L, R/hand head high holding out cloak)
 423. Grace Wallace (near F, standing facing L, head tilted R, R/hand above head)
 424. do. (F, seated looking up L, L/hand back of head, L/leg over R/knee)
 425. do. (F, seated looking up L, L/hand back of head, L/leg over R/knee)
 426. do. (F, R/foot on chair, R/hand at head, L/hand on hip)
 427. do. (F, seated leaning back, R/hand back of head, L/hand on L/thigh)
 428. do. (F, standing looking L, L/hand head high, skirt billowing at back)
 429. Fannie Ward (almost F, standing looking at camera, L/hand head high)
 430. Winnie Ward (F, kneeling on L/knee or seated, looking L, hands at chin, wings)
 431. do. (F, kneeling on L/knee or seated, looking L, hands at chin, wings)
 432. Georgia Welles (B, looking R, R/hand and L/elbow on fence, hat)
 433. do. (F, looking R, R/hand on chair arm)
 434. do. (near F, standing R/hand at hat, L/hand holding out skirt)
 435. Amy Wells (F, standing looking L, at hands raised head high, R/arm across waist)
 436. do. (F, standing near L/profile, L/hand head high, R/arm across waist)
 437. Mattie Wells (B, looking above camera to R, necklace with pendant)
 438. do. (F, standing L/foot slightly raised, R/hand on hip)
 439. do. (F, dancing pose L/foot above head, R/hand off picture)
 440. do. (F, R/foot pointing, L/hand above head, R/hand head high)
 441. do. (F, about to walk to R, hands above head holding wrap ends)
 442. do. (F, on tip-toes, hands head high holding wrap ends)
 443. do. (F, on tip-toes, hands back fo waist)

Xc2/392 PHOTOGRAPHIC CARDS - "ADMIRAL CIGARETTES" (continued)

1. 1st Set. Half-tones (continued)
444. Hattie Wells (F, L/foot forward, hands head high holding up skirt at back)
445. do. (F, facing L looking front, R/hand on L/foot above head)
446. Beatie West (near F, standing on L/foot, R/foot behind L/knee, L/hand at back)
447. Jewell Willard (W, looking L, elbows just visible)
448. do. (F, looking at camera, holding flowers by bosom)
449. do. (F, seated looking L, holding feather duster back of head)
450. do. (F, seated looking at camera, holding flowers on lap)
451. Carrie Williams (F, standing, male evening dress, L/hand on hip)
452. Maud Williams (2, standing L/profile, R/hand on chest, L/hand by L/thigh)
453. Cad Wilson (F, standing on plinth looking L, arms folded)
454. do. (F, seated on chair back, looking front, R/hand on R/knee, tricorn hat)
455. Maud Wilson (F, seated looking at camera, L/hand at head)
456. do. (F, seated looking L, hand by R/leg over L/knee)
457. Miss Wilson (F, standing by wall looking at camera, dark tights)
- X458. do. (F, standing by pillar looking L, light tights)
459. M. Wisdom (F, standing on plinth looking up L, rapier in R/hand)
460. do. (F, standing on plinth looking L, about to draw rapier)
461. Marie de Wolf (F, standing looking L, rapier in R/hand)
462. Laura Woods (F, standing L/hand on tree, R/hand on R/thigh)
463. do. (F, standing L/hand on tree, R/hand on R/thigh)
464. Margaret Yates (H & S, L/profile, bare head)
465. Yberril (F, standing by wall, tambourine in R/hand above head)
466. May Yohs (F, standing looking at camera, L/hand on hip, R/arm at side)
467. May Young (H & S, looking L, bare head)

2. 2nd Set. Sepia photos. Plain back. Five styles illustrated at Fig. Xc2/392-2:

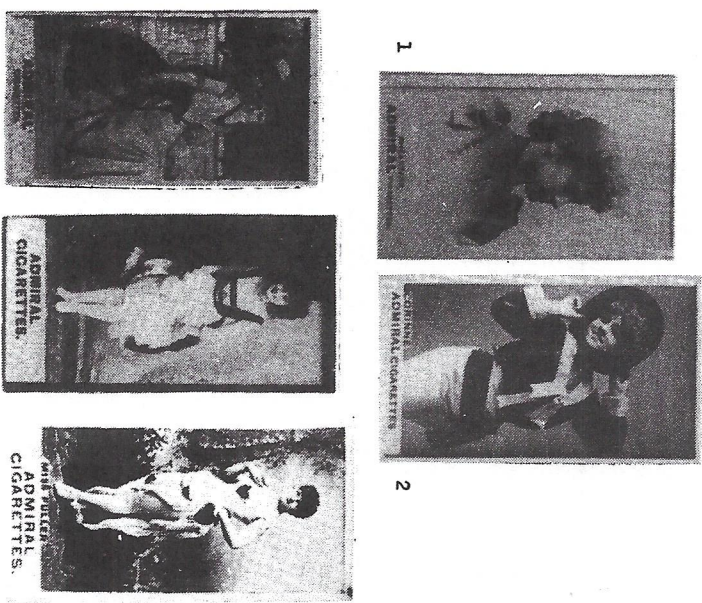


Fig. Xc2/392-2

Xc2/392 PHOTOGRAPHIC CARDS - "ADMIRAL CIGARETTES" (continued)

2. 2nd Set. Sepia photos.
- (1) Views, USA/394. Base of front in style of No. 1 at Fig. Xc2/392-2. 1 known - "Chicago Exposition" (horizontal format)
- (11) Art Series, USA/393. Base of front per No. 3 at Fig. Xc2/392-2. 8 known, no caption. First four vertical, second four horizontal format.
 1. Boy leaning over wall by seated girl with R/arm across whippet dog - No. 3, Fig. Xc2/392-2
 2. Three girls standing close together, one on R holding fixed fan in R/hand shoulder high
 3. F, girl in dark tights as boy, with L/arm round shoulder of girl in white skirt with hands together below waist
 4. F, girl standing with long stick in R/hand, L/hand on hip, figures in R/background include seated man playing banjo
 5. F, girl lying on seashore looking R, arm across rock, hand on each arm
 6. 2 girls reclining looking upwards, R/hand at head, flask on table on L
 7. F, girl reclining looking L, hands back of head, flask on table on L
 8. 2 girls reclining by two tree trunks, L/hand at chin, R/hand behind head
- (114) Actors and Actresses, USA/392. The several hundred cards known were probably issued in batches without regard to the style of captions or base of front. For ease in recording the cards have been listed in four groups - the first three being distinguished through particular features, e.g. style of caption or base, while the fourth covers the remainder, many of which are without caption and therefore impossible to identify without extensive illustrations.
- Group 1 - "Admiral Cigarettes" in two lines, style of No. 3 at Fig. Xc2/392-2. White borders. Front in yellowish shade of sepia, usually very faded, caption in small capitals in style (5) under Fig. Xc2/245A. Subjects known listed under Xc2/245-N. *See following pages 151-154*
- Group 2 - "Admiral Cigarettes" in one line, caption (if any) in medium size capitals, see No. 2 at Fig. Xc2/392. White borders. Cards with captions are as style (7) under Xc2/245A, but subjects are almost entirely different.
 1. Miss Adrian (F, standing leaning forward, R/hand on bust, L/hand at back)
 2. Pauline L'Allemand (F, leaning against wall holding up castanets)
 3. Mabel Amber (H & S, near profile to L, bare head)
 4. do. (F, seated looking down at flowers on lap)
 5. Virgie Arnold (F, standing leaning back, R/hand above head, L/hand raising skirt)
 6. Julia Arthur (2, standing facing L looking front, hands at back, hat)
 7. Miss Bailey (F, standing facing L looking front, L/hand at back, hat)
 8. Emily Banker (2, standing R/profile, L/hand on long pole)
 9. do. (H & S, near R/profile looking down, bare head)
 10. Anna Barrett (F, standing by curtain looking up/R, L/hand raising skirt)
 11. Elvira Barry (2, looking up/L, white head covering, L/hand on bosom)
 12. Eva Bartholdi (F, balancing on hands on ladder, legs above head)
 13. do. (F, balancing on hands on object on table, feet on head)
 14. Laura Biggar (F, standing, L/hand on hip - as No. 214, Xc2/245)
 15. do. (F, seated on chair arm, L/hand on hip - as No. 219, Xc2/245)
 16. do. (F, seated on rug over sofa looking L, hands at head)
 17. do. (F, seated looking R, R/hand on chair back - as No. 218, Xc2/245)
 18. Eugenie Blair (H & S, 3/4-face to R, hat, open throat)
 19. Miss Booth (H & S, looking R, bare head)
 20. do. (H & S, similar picture but eyes nearly closed, looking down)
 21. do. (almost F, seated leaning back, L/hand on L/thigh)
 22. Rachael Booth (F, leaning with elbows on tree trunk, hands at cheeks)
 23. do. (F, leaning on high-backed "table", R/hand at chin)
 24. Lillian Brink (F, standing head tilted R - as No. 281, Xc2/245)
 25. Ellen Burg (H & S, looking up large shell back of head)
 26. Miss Burgess (F, standing near L/profile, tambourine in R/hand by head)
 27. Minnie Burroughs (F, standing looking L, R/arm at side, L/hand at back)

Xc2/392 PHOTOGRAPHIC CARDS - "ADMIRAL CIGARETTES" (continued)

2. 2nd Set. Sepia photos. (11) Actors and Actresses - Group 2 (continued)
28. Helen Byron (near F, seated looking R, L/hand on small pillar)
29. do. (almost F, seated looking R, L/hand on material over low wall)
30. do. (F, standing, hands on low wall - as No. 239, Xc2/245)
31. Rancion Campbell (H & S, looking L, bare head)
32. Carlotta (F, seated on chair arm looking front, hands on lap)
33. do. (near F, dancing pose L/profile, R/foot raised but off picture)
34. do. (F, dancing pose looking at camera, hands on hips)
35. do. (F, standing looking at camera, R/hand on head)
36. Georgia Cayvan (H & S, 3/4-face to R on dark background cut to 1/2-circle shape)
37. do. (B, back view looking up/R, bare head)
38. Annie Colas (B, looking to L of camera, headpiece, necklace, coins on costume)
39. Corinne (H & S, smiling over brim of hat held across chin)
40. do. (F, leaning L, hands on brim of hat - No. 2, Figs. Xc2/392-2)
41. do. (F, standing holding tambourine over head)
42. do. (F, standing looking L, L/hand on hip, rope in R/hand at side)
43. Anna Deare (F, standing R/profile, L/hand above head - as No. 547, Xc2/245)
44. Miss Dore (F, standing R/profile, hat)
45. Miss F.D. Daly (H & S, L/profile, hat)
46. Hodge Davenport (F, standing looking L, hands in striped tunic pockets)
47. Ruth Davenport (Head and neck, R/profile, bare head)
48. Jessie Bartlett Davis (F, looking up/L, hands at back)
49. Nellie Desmond (F, standing looking R, R/hand at head)
50. Millie Price Dow (F, leaning with elbows on tree trunk - as No. 614, Xc2/245)
51. do. (F, dancing pose L/profile, R/hand and R/foot above head)
52. do. (F, R/leg on table, R/hand at chin, L/hand on hip)
53. Fanny Edwards (B, looking R, ornament in hair)
54. Louise Elsing (F, near L/profile, L/hand below waist, R/hand not visible)
55. Agnes Evans (F, seated looking at camera, R/hand on R/thigh)
56. Tony Farrell (H & S, short "male" wig, glancing R)
57. Emma Fanchon (F, standing by piano-seat, hands at back)
58. do. (F, R/foot on ledge, hands back of head)
59. Mabel Fenton (H & S, looking at camera, two bands on hair)
60. Della Fox (F, standing R/profile, L/hand on hip, metal headpiece)
61. Miss Georgia (F, seated looking at camera, hands clasped at R/knee)
62. Amelia Glover (F, standing, R/foot raised thigh high, hands chest high)
63. Lottie Glover (F, resting against with R/hand on stool - as No. 851, Xc2/245)
64. Grace Golden (F, dancing pose leaning to R, L/hand head high)
65. Emma Gordon (F, seated looking at camera, hands behind head)
66. Maud Granger (F, standing in opening in curtains R/profile, L/arm at side)
67. Jennie Gravini (F, dancing pose, R/hand above head, L/arm extended at side)
68. Mlle Grenadi (H & S, L/profile, headpiece, necklace)
69. Mlle Grenadine (almost F, standing looking at camera, hands on hips)
70. do. (F, back view R/profile, L/hand on hip)
71. "Grey Mare" (F, girl with R/hand under chin of seated boy)
72. Mabel Guyer (F, standing looking L, hands by rim of wide-brimmed hat)
73. Pauline Hall (F, looking R, hands together below waist)
74. Marie Halton (F, standing head tilted to L, R/hand head high)
75. Miss Hamil (F, standing leaning L, smiling, hands on bonnet)
76. Beatrice Hamilton (F, standing by curtain looking R, hands on hips)
77. Belle Hamilton (F, standing looking front, arms folded)
78. do. (F, standing R/foot on carved chest, hands back of head)
79. do. (F, standing R/hand on tilted chair, L/hand on hip)
80. do. (F, standing looking R holding rapier across thighs)
81. Rose Hamilton (F, standing R/foot on small stool, hands at back)
82. do. (F, seated looking L, L/arm across rung of chair back)
83. do. (F, standing looking L, hands at back)
84. Miss Hartley (B, looking upwards, veiling over head, smiling)
85. Sadie Hasson (F, seated looking up/R, hands on lap)

Xc2/392 PHOTOGRAPHIC CARDS - "ADMIRAL CIGARETTES" (continued)

2. 2nd Set. Sepia photos. (11) Actors and Actresses - Group 2 (continued)
86. Kate Hawthorne (F, standing holding flowers over table - as No. 997, Xc2/245)
87. Laila Hawthorne (F, standing looking at camera, R/hand at back)
88. F. Henderson (H & S, side view looking R, bare head)
89. do. (F, standing looking at camera, R/hand at chin, L/arm across waist)
90. Grace Henderson (B, looking R, flowers on corsage, open throat)
91. do. (B, looking R, high-necked plain dress)
92. Louise Henderson (H & S, R/profile, hood across head)
93. Ada Henry (F, standing looking down at camera, hands on hips)
94. May Howard (F, near L/profile, holding out cloak at back)
95. Katherine B. Howe (F, looking up/R, hat, hands below waist)
96. Freddie Hake (H & S, L/profile, bare head, open throat)
97. Agnes Huntington (F, standing looking R, hat in R/hand at side)
98. do. (F, standing looking R, R/hand at head)
99. do. (F, standing near R/profile, hands at thighs)
100. Birdie Irving (B, looking R, headpiece with chain across forehead)
101. Mlle. Jennine (H & S, looking at camera, hat, fur around neck)
102. Mlle Kavanagh (H & S, looking upwards, R/hand on chest)
103. Thos. Keene (male, B, looking at camera, fur hat)
104. Frankie Kemble (F, near profile to R, finger of L/hand at chin)
105. do. (F, standing looking R, hands clasped on chest)
106. do. (F, standing looking at camera, hands on hips)
107. Kletine (male, F, made up as negress, holding umbrella over R/shoulder)
108. Ethel Langdon (H & S, R/profile, bare head)
109. Mrs. Langtry (B, R/profile, bare head)
110. Louise Lawrey (H & S, R/profile, bare head)
111. Lillian Lawrence (B, looking at camera, fur wrap around neck)
112. Dora Leslie (H & S, L/profile, bare head)
113. The Ley Sisters (F, three girls in black tights, standing)
114. Ada Leyton (F, standing looking at camera, hands on hips)
115. do. (F, standing looking at camera, L/hand on tilted chair)
116. Bob Leyton (F, seated leaning back looking down at tambourine on lap)
117. do. (F, standing, R/hand above head, L/hand holding out skirt)
118. Lillie Leyton (F, R/foot on chair, R/hand at chin)
119. Marie Leyton (F, looking at camera, R/hand on tilted chair, L/hand above head)
120. do. (F, standing, R/leg held out horizontally, L/hand on hip)
121. do. (F, standing, R/hand by hip, L/hand held out waist high)
122. Miss L. Ister (F, standing, looking R, hands on thighs)
123. do. (F, standing looking R, hands on hips)
124. Elsie Lombard (H & S, looking at camera, bare head)
125. Miss Louis (F, standing near L/profile, L/hand by chin, R/arm at side)
126. Fanny Lyons (F, standing head tilted to R - as No. 1267, Xc2/245)
127. Cora Macy (H & S, looking at camera, dress visible - as No. 1347, Xc2/245)
128. Violet Mascotte (F, reclining, R/profile, L/hand raised - horizontal format)
129. Margaret Mather (F, kneeling, hands clasped as if asking for mercy)
130. Geraldine McCann (H & S, near L/profile, necklace, bare head)
131. Miss McIea (Head and neck, near L/profile, "helmet" band across hair)
132. Miss McIea (F, standing looking L, uniform tunic, L/hand on sword hilt)
133. Lella Meredith (F, seated on stone seat, L/profile, L/hand at head)
134. Laura Millard (F, standing against wall, hands at back)
135. Go-Wen-Go Mohawk (F, seated looking at camera, L/hand across lap)
136. Louise Montague (H & S, semi-back view, L/profile)
137. do. (H & S, front view, L/profile)
138. do. (F, standing looking L, R/hand on quiver, bow in R/hand)
139. do. (F, standing looking R, hands on hips)
140. do. (F, standing against screen, hands just off picture)
141. do. (F, standing by with reflection in mirror, hands below waist)
142. Laura Moore (F, looking at camera, hands with fingers extended below chin)

Xc2/392 PHOTOGRAPHIC CARDS - "ADMIRAL CIGARETTES" (continued)

2. 2nd Set. Septa photos. (111) Actors and Actresses - Group 2 (continued)
143. Lewis Morrison (F, male, standing looking L, R/hand chest high)
 144. Dorothy Morton (F, standing by curtain leaning forward, long hip-boots)
 145. do. (F, seated near R/profile, L/arm over chair back)
 146. Ida Mülle (F, looking L, hands above head on horizontal rope)
 147. Agnes Myers (H & S, looking at camera, hands below chin)
 148. Mlle Maret (F, seated on wall, R/hand on R/knee, bowl of fruit on L)
 149. Follinet Paget (H & S, looking R, bare head)
 150. Dollie Parks (F, seated on chair arm looking front, hands back of head)
 151. Miss Payne (F, standing looking R, hands together below waist)
 152. Lea Peasley (H & S, looking R, necklace with pendant)
 153. Miss Perry (F, leaning with L/arm on small table, R/hand at chin)
 154. Louise Pomeroy (F, standing looking L, L/hand on rapier sheath)
 155. Mrs. Jas. Brown Potter (H & S, vignette looking L, bare head)
 156. do. (W, hands on pillar looking upwards)
 157. Jas. P. Powers (F, male in female costume, R/leg head high)
 158. Miss Praeger (F, standing, hands behind head)
 159. Gladys Rankin (H & S, looking R, bare head)
 160. Phillis Rankin (H & S, similar portrait to 159 but earring in R/ear)
 161. Mlle Ravogll (H & S, looking up/L, bare head, high-necked dress)
 162. Flandre Raymond (F, seated on wall, wings, R/hand on L/thigh)
 163. Mlle Redpath (F, kicking with L/foot head high, L/profile, hands on hips)
 164. Charlie Reed (F, man holding hands of small boy)
 165. Ada Rehan (H & S, looking at camera, white wig)
 166. Fanny Rice (F, seated on high-backed chair looking R, hands off picture)
 167. do. (H & S, facing R looking round at camera, bare head)
 168. Annie Robinson (F, standing leaning over chair back, R/hand gestulating)
 169. Babette Rodney (F, standing looking L, R/arm at side)
 170. do. (F, standing near L/profile, L/arm at waist)
 171. do. (F, standing L/profile looking down, arms at sides)
 172. Miss Rowe (B, looking at camera, bare head)
 173. Lillian Russell (H & S, looking at camera, mortar-board hat)
 174. Mildred St. Clair (F, R/foot on low table, L/hand by trouser pocket)
 175. Clara St. Mir (F, dancing pose R/profile, R/hand off picture)
 176. Mildred St. Pierre (F, R/hand at chin, R/foot on low chair)
 177. Edwin Stevens (male, H & S, smiling at camera)
 178. Mary Stuart (F, standing R/hand raising hat, L/hand waist high)
 179. do. (F, seated, arms folded on ledge, looking at camera)
 180. Hilda Thomas (B, looking R, hands below chin, bare head)
 181. Miss Thomas (F, seated, R/elbow on mantelpiece, R/hand at head)
 182. Lydia Yeamens Titus (H & S, looking sideways at camera through veil, hat)
 183. do. (F, smiling at camera, R/arm at side)
 184. Ida Tracy (F, standing looking at camera, hands back of head)
 185. Nellie Tree (H & S, looking at camera, hat)
 186. Miss Vance (F, standing arms folded, looking at camera)
 187. do. (F, dancing pose R/hand head high, L/arm held out)
 188. Mlle Vand (F, looking at camera, R/hand at head, half L/arm off picture)
 189. Miss Verno (F, looking down at camera, arms at sides)
 190. Lillie Vernon (F, standing, L/hand on hip, dark costume, tricorne hat)
 191. do. (F, standing looking L, hands back of head)
 192. Flora Walsh (F, standing holding cord across thighs - as No. 2079, Xc2/245)
 193. do. (F, standing R/hand above head - as No. 2080, Xc2/245)
 194. Emma Warde (F, seated on corner of long chair looking R)
 195. A. Watts (B, looking at camera, two-strand necklace, small hat)
 196. Kittie Wells (F, standing looking R, L/hand waist high holding skirt)
 197. do. (F, "flying", L/hand head high, hair R/hand off picture)
 198. do. (F, standing leaning forward, flower garland in R/hand)
 199. Carrie Wilson (F, standing looking L, R/hand neck high, L/hand on hip)
 200. do. (F, standing looking L, holding out skirt ends, fez hat)
 201. Gracie Wilson (H & S, looking R, bare head)
 202. Mlle. Zizi (Head and neck looking L, five-strand necklace, bare head)

Xc2/392 PHOTOGRAPHIC CARDS - "ADMIRAL CIGARETTES" (continued)

2. 2nd Set. Septa photos. (111) Actors and Actresses - Group 2 (continued)
203. (no caption - F, girl standing R/profile, R/arm extended holding skirt, hat)
 204. (no caption - F, girl standing looking L, shoes with dark bands laced up legs)
 205. (no caption - Performing dog with huge white bow at collar sitting up in a top hat with its paws on brim)
- Group 3 - "Admiral Cigarettes" in two lines in large capitals, see No. 5 at Fig. Xc2/392-2. Captions in small capitals or in same size lettering in script. White borders. About 15 known without caption, and the following 38 with captions:
1. Miss Adams (F, leaning with R/arm on low pillar looking L, L/hand on hip)
 2. Miss Batcheider (F, standing glancing up to R, arms upstretched)
 3. Miss Beaudet (almost F, reclining on rock - horizontal format)
 4. Miss Bentley (F, standing looking R, R/hand on low pillar, hat)
 5. Miss Broughton (F, seated looking down, L/hand bust high, R/hand on hip)
 6. do. (F, seated looking L, hands above waist, bare head)
 7. Miss Burgess (F, standing looking L, L/hand on pillar by urn, helmet)
 8. Miss Carr (F, standing L/profile, hands at back)
 9. Corinne (F, standing looking R holding eye-glass to L/eye, R/hand on hip)
 10. Miss Clatton (F, standing looking at camera, R/hand on hip, L/hand on rope)
 11. Miss Clowsky (F, standing looking at camera, L/hand on hip, R/arm at side)
 12. Fannie Davenport (F, leaning over fence holding end of flower chain)
 13. Miss Fuller (F, standing, L/hand on hip - No. 5, Fig. Xc2/392-2)
 14. Miss Mand Graeger (H & S, R/profile, fur round head and neck)
 15. do. (F, seated, L/profile - horizontal format)
 16. Miss Hollenbauer (H & S, looking R, cloak over head)
 17. Miss Lee (F, seated looking at camera, hands on lap, tights, hat)
 18. Miss Littell (F, walking to L, L/profile, R/hand chest high holding hat ribbon)
 19. do. (F, standing L/profile, arms folded, hat)
 20. Miss Marsh (F, standing looking L, holding rapier across thighs)
 21. Miss Marthot (F, seated looking at camera, R/hand at chin, bare head)
 22. Miss Menzelle (F, ballet pose, L/foot pointing, L/hand above head)
 23. Miss Mertens (F, standing by pillar, arms at waist)
 24. Miss Nelson (F, standing looking L, hands on hips, striped costume)
 25. Miss Randall (H & S, looking L, bare head)
 26. Miss Ray (F, standing L/profile, hands together below waist)
 27. Miss Robinson (F, standing looking R, stick in R/hand with end by mouth)
 28. Miss Rowe (F, standing against chair by wall, looking L, R/hand at waist)
 29. Miss Ryder (F, standing looking at camera, hands on hips, hat)
 30. Miss Shaler (F, leaning with L/arm on wall, looking R, R/hand on hip)
 31. Sheridan (male, B, looking down R, no hands visible)
 32. Miss Sommer (near F, standing looking L, R/hand on hip)
 33. Miss Somerville (F, standing looking R, hands about waist high)
 34. Miss Stoa (F, standing looking R, arms folded)
 35. Miss Van Osten (F, seated looking R, hands together by L/thigh)
 36. Miss Vickers (F, standing looking above camera, hat, R/hand on hip)
 37. Miss Vincenti (F, standing looking up R, hands waist high)
 38. Miss Weatherly (F, standing by cylindrical hole in wall looking R, R/hand on R/thigh)
- Group 4 - "Admiral Cigarettes" in styles of Nos. 1, 3 and 4 at Fig. Xc2/392, border in white or brown. Over 300 known without caption, and the following 99 with caption mostly in small capitals, some in script or in larger capitals with serifs:
1. Adeline Abelina (F, looking R, open fan in R/hand head high)
 2. do. (F, standing R/profile, L/hand above head, R/hand thigh high)
 3. Madge Alphonsa (F, L/leg on ledge looking L, L/hand at head, R/hand on hip)
 4. Lady Alphonsina (F, standing, hands on cornucopia of flowers, R/leg behind L/leg)
 5. Mary Anderson (F, looking L, hat, hands off picture on lap)
 6. Miss Antoine (F, standing against rock looking R, arms folded)
 7. Miss Arnold (F, resting against low pillar, hands bust high, striped blouse)
 8. Miss Baker (F, standing on seashore looking L, R/hand on hip)
 9. Katie Barry (F, standing R/profile, L/hand chin high)

Xc2/392 PHOTOGRAPHIC CARDS - "ADMIRAL CIGARETTES" (continued)

2. 2nd Set. Septa photos. (111) Actors and Actresses - Group 4 (continued)
10. Miss Bent (F, seated R/profile looking down, I/hand back of head)
 11. do. (F, seated looking at camera holding small cross, legs crossed)
 12. Helen Bertram (H & S, L/profile, feather hat, open throat)
 13. do. (F, standing looking up R, hands about waist high holding ribbons)
 14. Miss Birdbell (H & S, R/profile, two-strand necklace with pendant, bare head)
 15. Bonfantini (F, standing looking L, hands below waist)
 16. Miss Booth (F, standing looking R, I/hand extended above waist high)
 17. Arta Bowen (H & S, side view L/profile, R/hand at chin, bare head)
 18. Miss Boyd (F, standing looking L, mortar board hat, I/hand on hip)
 19. do. (F, standing on small platform, hands at back)
 20. Rose Coglian (F, standing looking R, R/hand above head about to throw)
 21. Miss Comstock (F, standing in snow facing L looking front, R/hand on throat)
 22. Addie Congers (F, standing facing R looking at camera, hands at back)
 23. Miss Corra (F, seated looking at camera, R/hand bust high holding rope loop)
 24. Miss Danforth (F, leaning on hands against corner of wall)
 25. M. Deaville (L, standing holding end of ear to chin, hat)
 26. Miss Debon (W, looking L, tricorne hat, hands on lap)
 27. Cecile Delorme (F, standing, R/hand vertical above head I/hand by hip)
 28. George Demin (F, reclining on rock, R/hand at head)
 29. Miss Dupree (F, standing by rock looking at camera, hands at back)
 30. Miss Dyar (F, seated looking L, R/leg over L/knee)
 31. Miss Elton (F, seated looking up L, hands at L/knee - as Dot Kingsley)
 32. do. (F, seated in swing looking L, hands on swing ropes)
 33. Miss Ferrare (F, standing looking L, hands head high, hat)
 34. do. (F, standing looking R, eyeglasses in L/eye, mask in R/hand at waist)
 35. do. (F, standing looking R above dark scarf held to chin, hat)
 36. Della Fox (H & S, R/profile, necklace with pendant, bare head)
 37. do. (F, back view, standing R/profile)
 38. Miss Genny (F, standing looking at camera, hands together below waist)
 39. Helen Gray (F, seated looking L, L/arm across back of stone seat)
 40. Helen Grey (F, seated looking at camera, L/hand on R/leg over L/knee)
 41. Henderson (F, walking to R by wall, L/arm stretched forward)
 42. F. Henderson (F, standing looking at camera, hands on hips)
 43. Miss Henderson (F, standing looking at camera, hands on hips) (probably as 42)
 44. Miss Holly (F, reclining reading book - horizontal format)
 45. Fro. Jager (F, standing L/hand on rock looking L, binoculars in R/hand at side)
 46. Marie Jansen (F, standing looking at camera, arms extended waist high)
 47. Johnston (F, standing looking R, hands back of head)
 48. Miss Kendall (F, seated looking at camera, open fan in R/hand)
 49. Dot Kingsley (F, seated looking up L, hands at L/knee - as Miss Elton)
 50. Miss Kerche (F, standing L/profile, hands at back)
 51. do. (F, standing looking at camera, hands at head)
 52. Miss Leslie (H & S, looking at camera, hat)
 53. Madeline Insette (F, standing looking upwards, hands back of head)
 54. Zelle de Lussan (F, standing looking R, holding long stick, legs crossed)
 55. Zelle de Lussan (F, standing looking at camera, open fan in R/hand shoulder high)
 56. do. (F, standing looking R, oval fan in R/arm at side)
 57. Mile Wægt (near F, reclining, L/hand at head, open fan in R/hand on lap)
 58. Miss Wajilton (F, about to walk to R looking back to L, R/hand on hip)
 59. Milly Meyer (F, leaning against small pillar looking up R, playing banjo)
 60. Miss Moore (F, seated R/elbow on table, R/hand at head, L/hand on hip)
 61. Miss Murdoch (B, head tilted to R, looking at camera, bare head)
 62. Miss Nacio (B, looking L, bonnet, hands not visible)
 63. M. Olliner (F, R/profile, star in hair, arms at sides)
 64. Annie Pitley (F, on ship, R/profile, hands head high holding telescope)
 65. do. (F, standing looking L, R/arm across waist)
 66. Louise Pomeroy (F, standing looking L, R/arm across waist)
 67. do. (F, two girls looking L, curtain background)

(426)

Xc2/392 PHOTOGRAPHIC CARDS - "ADMIRAL CIGARETTES" (continued)

2. 2nd Set. Septa photos. (111) Actors and Actresses - Group 4 (continued)
68. Miss Randall (F, standing looking at camera, I/hand on rock)
 69. Grace Seavey (F, seated L/profile, R/hand by head)
 70. do. (F, seated in hammock L/profile, R/hand half off picture)
 71. Eva Selbhe (H & S, Vignette, looking at camera, hair loose over shoulders)
 72. do. (H & S, L/profile, bare head, hair up)
 73. do. (W, looking upwards, L/arm around pillar, dark hood)
 74. do. (F, seated leaning to L looking at camera, I/hand on lap)
 75. Miss Seebold (F, seated looking L, hands together at side of head)
 76. Miss Sencic (F, standing R/hand waist high holding rapier with tip on ground)
 77. Miss Shall (F, seated looking R, open fan in R/hand waist high)
 78. do. (F, standing looking R, bare head, open throat)
 79. Effie Shannon (H & S, looking R, bare head, open throat)
 80. Rhea Starr (H & S, R/profile, bare head - No. 1, Fig. Xc2/392-2)
 81. do. (F, leaning against pillar, rifle in R/hand, epaulettes)
 82. Miss Stetsen (F, standing looking above camera, R/hand on hip, seaboard in L/hand)
 83. do. (F, standing looking R, R/hand on hip, I/hand across top of thigh)
 84. do. (F, standing legs apart looking R, hands on hips)
 85. Ruth Stetson (F, seated on small pillar looking down, R/hand neck high)
 86. do. (F, seated looking at camera, L/hand on R/leg over L/knee)
 87. Annie Sutherland (F, standing on board ship looking L, arms folded)
 88. Annie Sutherland (F, standing looking L holding closed fan above waist)
 89. Fay Templeton (F, standing looking at camera, hands bust high)
 90. M. Thomas (F, standing L/profile, L/hand on hip)
 91. Miss Thorpe (H & S, looking upwards, dark bow headpiece)
 92. do. (F, standing looking R, R/hand on balustrade, I/hand at head)
 93. Miss Vanoni (F, leaning against wall pillar, R/arm extended chin high)
 94. Vavasour (F, three girls standing, bare heads)
 95. Miss Verona (F, standing looking front, R/arm at side, I/hand on hip)
 96. Jennie Williams (F, standing by fence looking at camera, hands below waist)
 97. Miss Williams (F, standing looking at R/hand head high, L/hand at head)
 98. do. (F, standing looking L, R/hand at back)
 99. Aney Wilnot (H & S, looking R, bare head)

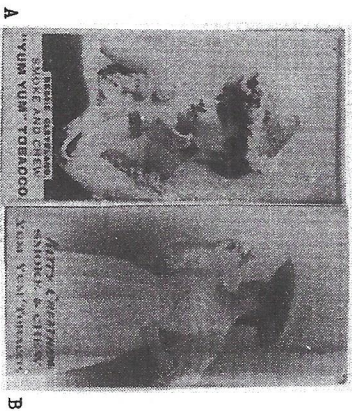


Fig. Xc2/402-2

(427)