

Xc2/145 PHOTOGRAPHIC CARDS - DUKE (A). Small size, plain back. This grouping covers the cards with plain back under USA/145 in the American Catalog. For ease in recording, the cards have been split into five sets, but they were clearly prepared in batches with no great regard for numbering, caption or style. The unnumbered cards under the first and fifth sets are probably subjects intended for inclusion in the numbered sequences, but with number omitted by design or accident. Many numbers have been written in by hand and are difficult to read. The cutting of the cards has resulted in some numbers and captions on some printings being not fully visible; thus under the first set the subject at No. 105 (Davenport), is found numbered "11" or "10" and with caption "Davenport..." or "Davenport...", the rest of the number or caption being eliminated by cutting. In the listings, subjects without caption are indicated by descriptions in parentheses.



1. First Set. Duke Set J76-61-1. Two or more subjects known at many numbers.
 A. "Cross-Out Cigarettes" with number and caption (if any) in script in design, see Fig. Xc2/145-1A, 60-65 x 34-37. Many found with two different positions or styles of numeral, caption or brand. *
 B. As A, size 65-67 x 43-44.
 C. "Cross-Out Cigarettes" in script in design, number and caption in printed capitals in margin at base, see Fig. Xc2/145-1C. Numerals are not preceded by "No." 64-66 x 35-37. Cards in same style but with numerals preceded by "No." are recorded under Xc2/145-2.

(1) Numbered Cards. Numbers in parentheses, i.e. (1), (2), (3), etc., indicate actual card numbers, each number in parenthesis indicating a different subject.

- (1) A Davenport - see (105)
- (1) A Floyd
- (1) A Miss Floyd
- (2) A Annie Robe
- (2) A Robe (F, hands above head) - as 2 (127)
- (2) A Stenli... - see (28)
- (2) A Stenli... - see (28)
- (3) A Alma Stewart Starly
- (3) A Patrice - known Unrd. - see (11)
- (3) A Parks - known Unrd. - see (11)
- (3) A Russell (H & S, looking up, manilla)
- (3) A Lillian Russell
- (3) A Vaughn - see (55)
- (3) A Lilly Post
- (3) A Dupre - known Unrd. - see (11)
- (3) A Duprie
- (3) A Minnie Duprie
- (3) A Miss Hall
- (3) A Ulmer - as (154)
- (3) A Geraldine Ulmer
- (3) A Miss Parks
- (3) A Lester - as (243)
- (3) A (F, hands at back)
- (3) A Miss Lester

* specimens batches of 20 subjects were included in the Display Cards under Set J76-107-3 in Part III, which also indicates that 250 different subjects were contemplated (216)

Xc2/145 PHOTOGRAPHIC CARDS - DUKE (continued)

1. First Set. (1) Numbered Cards (continued)

- (20) A Miss Seaman
- (20) A Gregson - as 2 (162) & 3 (3)
- (20) A Helen Gregson (F, R/hand on hip)
- (21) A Mattie Ferguson (standing, parasol over shoulder) - as Minnie Dupree (12)
- (22) A Van Aston - known Unrd. see (11)
- (23) A Mitchell - as 2 (204)
- (24) A Ulmer
- (25) A Miss Elton - known Unrd. - see (11), also as 2 (203)
- (25) A (H & S, high collar to dress)
- (26) A Leslie
- (27) A Miss Leslie
- (27) A Leonard
- (27) A Belle Leonard
- (28) A Stenli - as (2)
- (28) A Miss Stanley
- (28) A Bells
- (28) A (11), also as 2 (147)
- (29) A Miss Probridge
- (29) A (B, front, no hat)
- (29) A Miss Miller
- (29) A Everson
- (29) A Miss Sverson (1/profile, bare head)
- (30) A Miss Baker
- (31) A Forsythe
- (32) A Miss Nybo - as 2 (162)
- (32) A Baker
- (33) A Wickens
- (34) A Mattie Wickens
- (34) A Sutherland - as (84) & 2 (144)
- (35) A Temple
- (35) A Daisy Temple
- (35) A Miss Flyler
- (35) A Stenli (F, looking R, hat) - known Unrd. - see (11)
- (37) A Lillian Russell
- (37) A Weatherby - as 2 (130)
- (38) A Miss Bell
- (39) A Miss Jones
- (40) A Thureby
- (40) A Emma Thureby
- (40) A Elton - as Mabeth (108)
- (40) A Dama Abbott
- (41) A Bell - as (52)
- (42) A Bella Thure
- (43) A Belle Thurehart
- (44) A Olinoux
- (45) A Emma Abbott
- (45) A Randa
- (45) A Miss Fandall
- (45) A Goodwin
- (46) A Mohlby - as 2 (57)
- (46) A Jennie Mohlby
- (47) A Miss De Sortez - as 2 (209)
- (47) A De Sortez
- (48) A De Sottle
- (48) A Miss Carroll
- (49) A (F, R/hand on head)
- (49) A (F, stick in R/hand) - as Urquhart (117)
- (50) A Goodwin - Johnson - as (254) and 2 (201)
- (50) A Urquhart - as (14)
- (50) A (F, hands thigh high) - as Trubert (114)
- (51) A Dupre
- (51) A Annie Robe - as 2 (149)
- (52) A Minnie Dupree
- (52) A Ulmer
- (52) A Miss Bell - as (42)
- (52) A Castleton - as 4 (97)
- (53) A Kate Castleton
- (54) A Miss Lowe
- (54) A (F, arms folded)
- (55) A Miss Vaughan - as (5)
- (55) A Wendle
- (57) A (B, looking R)
- (57) A Miss Wendle (F, by column, R/arm at waist)
- (58) A Miss Darr
- (58) A De Roy
- (58) A Miss De Roy
- (59) A Wickens
- (59) A Mattie Wickens
- (59) A Montague - as 2 (170)
- (60) A Annie Pixley - known Unrd. - see (11), also as 2 (141)
- (61) A Pixley
- (61) A Vaughan
- (62) A Miss Vaughan
- (63) A Xley
- (64) A Annie Pixley
- (64) A Miss Cottrelly
- (65) A Miss Nelson
- (65) A Wickens
- (66) A Miss Wickens
- (66) A (H & S, face to R)
- (67) A Miss Conroy
- (67) A Lilly Dupree - as 2 (166)
- (67) A Russell - as 2 (211), 4 (5) & (153)
- (67) A Lillian Russell
- (67) A Modjeska - see (167)

2/145 PHOTOGRAPHIC CARDS - DIKE (continued)

First Set. (1) Numbered Cards (continued)

- X(96) A (2, hands on hips) C Miss Greene
- X(97) C Miss Beckett
- X(98) A (B, E/hand at chin) C Miss Dille Dean
- X(99) A C Miss Woodworth - as 2 (71), 4 (24)
- X(99) A C Ida Malle
- X(99) A C Lewis
- X(100) A C Miss Lewis
- X(100) A C Davenport - as (105)
- X(100) A C Wilson
- X(101) AB C Rose Wilson
- X(101) AB C Wickers
- X(102) AB C Mattie Wickers
- X(103) A C Smith
- X(104) A C Miss Swath
- X(105) AB C Bart
- X(105) AB C Miss Bart
- X(105) AB C Davenport - as (1), (10), (100), also as 3 (25), 2 (199)
- X(106) A C Miss Davenport
- X(106) A C Russell
- X(107) A C Lillian Russell
- X(107) A C Vaughn
- X(107) A C Blanche Vaughn
- X(107) A C (3, veil headpiece) C Miss Dubois
- X(107) A C Nesbitt - as (211)
- X(107) A C Bonfanti
- X(107) A C Mile. Bonfanti
- X(107) A C Maebeth - as Etton (40)
- X(107) A C Miss Russell - as 2 (186)
- X(108) A C Mægele Mitchell
- X(108) A C Ulmer
- X(108) A C (in green, clutching cat) C Geraldine Ulmer
- X(108) A C Bessele Ferrell
- X(109) A C Pauline Hall - as (119)
- X(110) A C Ulmer - as Sadie Roosevelt 4 (68)
- X(110) A C Miss Erush
- X(110) A C Gertrude
- X(111) A C Fay Templeton - as 2 (118), 3 (77)
- X(111) A C Russell - as 2 (129), 3 (13)
- X(111) A C Lillian Russell
- X(111) A C Myra Goodwin
- X(111) A C Report (two girls on toboggan, heads apart) - as (78) & 4 (166)
- X(112) A C (F, hands on curtain) C Prubert - as (50) without caption
- X(112) A C Lillian Russell
- X(113) A C Dittlinger - known Unid. - see (11)
- X(113) A C also as (226)
- X(114) A C Miss Jones
- X(114) A C (F, L/arm at waist) C Janny Keeves
- X(115) A C Zoobe
- X(115) A C (2, hands at back) C Annie Robe
- X(115) A C Lillian Russell
- X(115) A C Dittlinger - known Unid. - see (11)
- X(115) A C also as (226)
- X(115) A C Miss Jones
- X(115) A C (F, L/arm at waist) C Janny Keeves
- X(116) A C Zoobe
- X(116) A C (2, hands at back) C Annie Robe
- X(117) A C Unquardt - as (49)
- X(117) A C (F, stick in R/hand) C St. Clair
- X(117) A C Reitz (two girls on toboggan, heads together) - as (260)
- X(118) A C Duke
- X(118) A C (F, rapier across thighs) C Carrie Duke
- X(119) A C Pauline Ha.. - as (110)
- X(120) A C Miss Bonavia
- X(120) A C Fay Templeton - as 2 (136), 3 (65)
- X(121) A C Sadie Martinet - as 2 (128)
- X(122) A C Ada Richmond - as 2 (151)
- X(123) A C Bell
- X(124) A C Gertrude Wade (picture as Bell) (near F, button boote)
- X(124) A C Miss Wallen
- X(125) A C Clarkton (four figures)
- X(125) A C Kate Clarkton
- X(126) A C Alma Stanley
- X(127) A C Flora Livingston
- X(128) A C Lillie Howard
- X(129) A C Perkins
- X(130) A C (F, arms at sides) C Miss Perkins
- X(131) A C Topsy Verlin
- X(131) A C Carrie Perkins
- X(132) A C Rose Temple
- X(133) A C L. Russell
- X(133) A C Lillian Russell - F.g.
- X(133) A C Xo2/145-10 - as 3 (127)
- X(133) A C Miss Barlow - as 2 (159), 4 (74)
- X(134) A C Miss Spencer
- X(135) A C S. Martinet
- X(135) A C Sadie Martinet
- X(135) A C L. Russell - as 3 (5)
- X(136) A C Lillian Russell
- X(137) A C Waldemere
- X(141) A C Mle Nults - as 2 (135), 4 (110)
- X(142) A C Martinet - as 2 (37), 4 (4)
- X(142) A C Sadie Martinet
- X(142) A C (3, L/arm across waist) - as (172)
- X(143) A C Miss Johnson (145)
- X(144) A C Sutherland - as 2 (214), 4 (150)
- X(145) A C Langtry - as 2 (146)
- X(145) A C Lee
- X(145) A C Miss Lee
- X(145) A C (F, standing in front of tree) - as Rose Coghlin 2 (230)
- X(145) A C Miss Johnson - as (142), also as Clative Bonneface 4 (168)
- X(146) A C Thee - as 2 (116)
- X(147) A C Alice Harrison
- X(148) A C Miss Simpson - as 2 (173)
- X(149) A C Sutherland - as 2 (143)
- X(150) A C Evans
- X(150) A C Lizzie Evans
- X(150) A C Miss Stanley - as 2 (192)
- X(151) A C Templeton - as 2 (137)
- X(152) A C Jarbeau - as 2 (122)
- X(153) A C (F, reclining, spotted tights) - as Mary Stark (251)
- X(154) A C Ulmer - as (8)
- X(154) A C Geraldine Ulmer
- X(154) A C Jarbeau - as 4 (156)
- X(155) A C Miller
- X(155) A C (F, standing looking R)
- X(155) A C Mollie Fuller
- X(155) A C Miss Leo - as 2 (191)
- X(156) A C Sophie Eyre
- X(157) A C Jarbeau
- X(158) A C Gertrude Wilson - as 2 (194), 4 (163)
- X(159) A C Lydia Thompson
- X(160) A C Martinet
- X(160) A C Mae (sic) Martinet
- X(161) A C Lillian Russell - as 2 (99)
- X(162) A C Elmore (looking L)
- X(162) A C Marian Elmore
- X(162) A C Lillian Elmore (R/profile)
- X(163) A C Emma Corson - as 2 (157)
- X(164) A C Kodjeska
- X(165) A C Hme Kodjeska
- X(165) A C Mollie Fuller - as 2 (153), 3 (27)
- X(166) A C Mollie Muller & Topsy Van
- X(167) A C (two girls, one on L with fan) C Marie Muller & Topsy Van
- X(167) A C Kodjeska - as (67)
- X(168) A C Hme Kodjeska
- X(168) A C Pauline Hall
- X(168) A C Mikado (three girls)
- X(168) A C Carrie Andrewe - as 2 (202)
- X(169) A C Madison
- X(170) A C Miss Madison
- X(170) A C Miss Wilson - as 2 (207)
- X(171) A C Wilson
- X(171) A C (3, hands behind head) C Mrs. Anderson
- X(172) A C Emma Corson - as (260)
- X(172) A C Alice Gordon
- X(172) A C Miss Jerome
- X(172) A C L. Elmore
- X(173) A C Grubb
- X(173) A C Lillian Grub
- X(173) A C Rice - as 2 (155), 3 (6)
- X(174) A C Miss Rice
- X(174) A C (3, book on lap) C Alma Stanley
- X(175) A C Alma Stanley
- X(176) A C Ulmer
- X(176) A C Andrewson
- X(176) A C Mary Anderson

Xo2/145 PHOTOGRAPHIC CARDS - DIKE (continued)

2. First Set. (1) Numbered Cards (continued)

- X(117) C Unquardt - as (49)
- X(117) C (F, stick in R/hand) C St. Clair
- X(117) C Reitz (two girls on toboggan, heads together) - as (260)
- X(118) A C Duke
- X(118) A C (F, rapier across thighs) C Carrie Duke
- X(119) A C Pauline Ha.. - as (110)
- X(120) A C Miss Bonavia
- X(120) A C Fay Templeton - as 2 (136), 3 (65)
- X(121) A C Sadie Martinet - as 2 (128)
- X(122) A C Ada Richmond - as 2 (151)
- X(123) A C Bell
- X(124) A C Gertrude Wade (picture as Bell) (near F, button boote)
- X(124) A C Miss Wallen
- X(125) A C Clarkton (four figures)
- X(125) A C Kate Clarkton
- X(126) A C Alma Stanley
- X(127) A C Flora Livingston
- X(128) A C Lillie Howard
- X(129) A C Perkins
- X(130) A C (F, arms at sides) C Miss Perkins
- X(131) A C Topsy Verlin
- X(131) A C Carrie Perkins
- X(132) A C Rose Temple
- X(133) A C L. Russell
- X(133) A C Lillian Russell - F.g.
- X(133) A C Xo2/145-10 - as 3 (127)
- X(133) A C Miss Barlow - as 2 (159), 4 (74)
- X(134) A C Miss Spencer
- X(135) A C S. Martinet
- X(135) A C Sadie Martinet
- X(135) A C L. Russell - as 3 (5)
- X(136) A C Lillian Russell
- X(137) A C Waldemere
- X(141) A C Mle Nults - as 2 (135), 4 (110)
- X(142) A C Martinet - as 2 (37), 4 (4)
- X(142) A C Sadie Martinet
- X(142) A C (3, L/arm across waist) - as (172)
- X(143) A C Miss Johnson (145)
- X(144) A C Sutherland - as 2 (214), 4 (150)
- X(145) A C Langtry - as 2 (146)
- X(145) A C Lee
- X(145) A C Miss Lee
- X(145) A C (F, standing in front of tree) - as Rose Coghlin 2 (230)
- X(145) A C Miss Johnson - as (142), also as Clative Bonneface 4 (168)
- X(146) A C Thee - as 2 (116)
- X(147) A C Alice Harrison
- X(148) A C Miss Simpson - as 2 (173)
- X(149) A C Sutherland - as 2 (143)
- X(150) A C Evans
- X(150) A C Lizzie Evans
- X(150) A C Miss Stanley - as 2 (192)
- X(151) A C Templeton - as 2 (137)
- X(152) A C Jarbeau - as 2 (122)
- X(153) A C (F, reclining, spotted tights) - as Mary Stark (251)
- X(154) A C Ulmer - as (8)
- X(154) A C Geraldine Ulmer
- X(154) A C Jarbeau - as 4 (156)
- X(155) A C Miller
- X(155) A C (F, standing looking R)
- X(155) A C Mollie Fuller
- X(155) A C Miss Leo - as 2 (191)
- X(156) A C Sophie Eyre
- X(157) A C Jarbeau
- X(158) A C Gertrude Wilson - as 2 (194), 4 (163)
- X(159) A C Lydia Thompson
- X(160) A C Martinet
- X(160) A C Mae (sic) Martinet
- X(161) A C Lillian Russell - as 2 (99)
- X(162) A C Elmore (looking L)
- X(162) A C Marian Elmore
- X(162) A C Lillian Elmore (R/profile)
- X(163) A C Emma Corson - as 2 (157)
- X(164) A C Kodjeska
- X(165) A C Hme Kodjeska
- X(165) A C Mollie Fuller - as 2 (153), 3 (27)
- X(166) A C Mollie Muller & Topsy Van
- X(167) A C (two girls, one on L with fan) C Marie Muller & Topsy Van
- X(167) A C Kodjeska - as (67)
- X(168) A C Hme Kodjeska
- X(168) A C Pauline Hall
- X(168) A C Mikado (three girls)
- X(168) A C Carrie Andrewe - as 2 (202)
- X(169) A C Madison
- X(170) A C Miss Madison
- X(170) A C Miss Wilson - as 2 (207)
- X(171) A C Wilson
- X(171) A C (3, hands behind head) C Mrs. Anderson
- X(172) A C Emma Corson - as (260)
- X(172) A C Alice Gordon
- X(172) A C Miss Jerome
- X(172) A C L. Elmore
- X(173) A C Grubb
- X(173) A C Lillian Grub
- X(173) A C Rice - as 2 (155), 3 (6)
- X(174) A C Miss Rice
- X(174) A C (3, book on lap) C Alma Stanley
- X(175) A C Alma Stanley
- X(176) A C Ulmer
- X(176) A C Andrewson
- X(176) A C Mary Anderson

1st Set. (1) Numbered Cards (continued)

X180	A	Ulmcr	X(220)	A	Rice
X190	A	Gerraldine Ulmer	(220)	A	Miss Rice
X191	A	Miss O'Neil	(221)	A	Sutherland - as 4 (15)
X192	A	Douglas - as 2 (134)	(221)	A	Jarboen - as 4 (120)
X193	A	(F, three women)	(221)	A	L. Thompson
X194	A	Black Huscar Group	(222)	A	Lydia Thompson
X195	A	Mrs. Langtry	(222)	A	Dunbrood
X196	A	L. Paulin	(222)	A	Amie Duncomb
X197	A	Miss L. Paulin	(222)	A	Van Osten
X198	A	Miss Lester - as 2 (200)	(222)	A	Miss Van Osten
X199	A	Miss Lester - as 2 (200)	(222)	A	Miss Hall
X200	A	Miss Lester - as 2 (200)	(222)	A	L. Paulin
X201	A	Miss Lester - as 2 (200)	(222)	A	Pauline Markham
X202	A	Miss Lester - as 2 (200)	(222)	A	Markham
X203	A	Miss Lester - as 2 (200)	(222)	A	Pauline Markham
X204	A	Miss Lester - as 2 (200)	(222)	A	Mitchell
X205	A	Miss Lester - as 2 (200)	(222)	A	Mabel Mitchell
X206	A	Miss Lester - as 2 (200)	(222)	A	(two girls, ballet pose) - as
X207	A	Miss Lester - as 2 (200)	(222)	A	Ettinger (115)
X208	A	Miss Lester - as 2 (200)	(222)	A	Prince
X209	A	Miss Lester - as 2 (200)	(222)	A	Jennie Prince
X210	A	Miss Lester - as 2 (200)	(222)	A	Ida Costello (or Costello)
X211	A	Miss Lester - as 2 (200)	(222)	A	Flint
X212	A	Miss Lester - as 2 (200)	(222)	A	Miss Flint
X213	A	Miss Lester - as 2 (200)	(222)	A	Anna Brew. - as (242) (looking R)
X214	A	Miss Lester - as 2 (200)	(222)	A	Amie Brewoor
X215	A	Miss Lester - as 2 (200)	(222)	A	Blow (number and caption unclear)
X216	A	Miss Lester - as 2 (200)	(222)	A	- as 2 (234)
X217	A	Miss Lester - as 2 (200)	(222)	A	Day
X218	A	Miss Lester - as 2 (200)	(222)	A	Hall - as 2 (132)
X219	A	Miss Lester - as 2 (200)	(222)	A	Miss Hall
X220	A	Miss Lester - as 2 (200)	(222)	A	Templeton - as 2 (183)
X221	A	Miss Lester - as 2 (200)	(222)	A	Miss Primrose - as (15) and
X222	A	Miss Lester - as 2 (200)	(222)	A	2 (156)
X223	A	Miss Lester - as 2 (200)	(222)	A	Primrose
X224	A	Miss Lester - as 2 (200)	(222)	A	Mrs. Cleveland
X225	A	Miss Lester - as 2 (200)	(222)	A	Miss Giroux
X226	A	Miss Lester - as 2 (200)	(222)	A	(F, R/arm above waist)
X227	A	Miss Lester - as 2 (200)	(222)	A	Giroux
X228	A	Miss Lester - as 2 (200)	(222)	A	Mrs. Cleveland
X229	A	Miss Lester - as 2 (200)	(222)	A	Bonfanti - known Und. - see (11)
X230	A	Miss Lester - as 2 (200)	(222)	A	Dupre - as 2 (150)
X231	A	Miss Lester - as 2 (200)	(222)	A	Minnie Dupre
X232	A	Miss Lester - as 2 (200)	(222)	A	Miss Dupre
X233	A	Miss Lester - as 2 (200)	(222)	A	(F, seated, hands by R/thigh)
X234	A	Miss Lester - as 2 (200)	(222)	A	Miss Lester
X235	A	Miss Lester - as 2 (200)	(222)	A	Miss Giroux
X236	A	Miss Lester - as 2 (200)	(222)	A	Miss Giroux
X237	A	Miss Lester - as 2 (200)	(222)	A	Miss Giroux
X238	A	Miss Lester - as 2 (200)	(222)	A	Miss Giroux
X239	A	Miss Lester - as 2 (200)	(222)	A	Miss Giroux
X240	A	Miss Lester - as 2 (200)	(222)	A	Miss Giroux
X241	A	Miss Lester - as 2 (200)	(222)	A	Miss Giroux
X242	A	Miss Lester - as 2 (200)	(222)	A	Miss Giroux
X243	A	Miss Lester - as 2 (200)	(222)	A	Miss Giroux
X244	A	Miss Lester - as 2 (200)	(222)	A	Miss Giroux
X245	A	Miss Lester - as 2 (200)	(222)	A	Miss Giroux
X246	A	Miss Lester - as 2 (200)	(222)	A	Miss Giroux
X247	A	Miss Lester - as 2 (200)	(222)	A	Miss Giroux
X248	A	Miss Lester - as 2 (200)	(222)	A	Miss Giroux
X249	A	Miss Lester - as 2 (200)	(222)	A	Miss Giroux
X250	A	Miss Lester - as 2 (200)	(222)	A	Miss Giroux
X251	A	Miss Lester - as 2 (200)	(222)	A	Miss Giroux
X252	A	Miss Lester - as 2 (200)	(222)	A	Miss Giroux
X253	A	Miss Lester - as 2 (200)	(222)	A	Miss Giroux
X254	A	Miss Lester - as 2 (200)	(222)	A	Miss Giroux
X255	A	Miss Lester - as 2 (200)	(222)	A	Miss Giroux
X256	A	Miss Lester - as 2 (200)	(222)	A	Miss Giroux

1st Set. (1) Numbered Cards (continued)

(242)	A	Everoor (looking L)	(304)	A	Miss Switch - as 2 (246)
(242)	A	Everoor (looking R) - as (229)	(305)	A	Miss Switch - as 2 (246)
(242)	A	Miss Hall	(306)	A	Miss Switch - as 2 (246)
(242)	A	(F, two girls standing)	(307)	A	Miss Switch - as 2 (246)
(243)	A	Kiraly Group	(308)	A	Miss Switch - as 2 (246)
(243)	A	Lester - as (9)	(309)	A	Miss Switch - as 2 (246)
(244)	A	Jennie Hand	(310)	A	Miss Switch - as 2 (246)
(244)	A	Harrison - known Und. see (11)	(311)	A	Miss Switch - as 2 (246)
(245)	A	(standing holding fern leaf)	(312)	A	Miss Switch - as 2 (246)
(246)	A	Lester	(313)	A	Miss Switch - as 2 (246)
(246)	A	Burghart	(314)	A	Miss Switch - as 2 (246)
(246)	A	Miss Evans	(315)	A	Miss Switch - as 2 (246)
(249)	A	Evans	(316)	A	Miss Switch - as 2 (246)
(250)	A	Baker	(317)	A	Miss Switch - as 2 (246)
(250)	A	Kate Gerard - as (75)	(318)	A	Miss Switch - as 2 (246)
(251)	A	Alice Ames	(319)	A	Miss Switch - as 2 (246)
(251)	A	Alice Ames	(320)	A	Miss Switch - as 2 (246)
(251)	A	Alice Ames	(321)	A	Miss Switch - as 2 (246)
(252)	A	Mary Stark - as (153)	(322)	A	Miss Switch - as 2 (246)
(253)	A	Alice Ames	(323)	A	Miss Switch - as 2 (246)
(253)	A	Alice Ames	(324)	A	Miss Switch - as 2 (246)
(254)	A	Ballant	(325)	A	Miss Switch - as 2 (246)
(254)	A	Madame Rollint	(326)	A	Miss Switch - as 2 (246)
(254)	A	Madame Rollint	(327)	A	Miss Switch - as 2 (246)
(254)	A	Madame Rollint	(328)	A	Miss Switch - as 2 (246)
(254)	A	Madame Rollint	(329)	A	Miss Switch - as 2 (246)
(254)	A	Madame Rollint	(330)	A	Miss Switch - as 2 (246)
(254)	A	Madame Rollint	(331)	A	Miss Switch - as 2 (246)
(254)	A	Madame Rollint	(332)	A	Miss Switch - as 2 (246)
(254)	A	Madame Rollint	(333)	A	Miss Switch - as 2 (246)
(255)	A	Alice Reynolds and Miss Harrison	(334)	A	Miss Switch - as 2 (246)
(256)	A	Alice Reynolds and Miss Harrison	(335)	A	Miss Switch - as 2 (246)
(260)	A	(two girls on toboggan, heads together) - as Helita (118)	(336)	A	Miss Switch - as 2 (246)
(260)	A	Bama Corson - as (172)	(337)	A	Miss Switch - as 2 (246)
(300)	A	Miss Murdoch - as 2 (256), 3 (11)	(338)	A	Miss Switch - as 2 (246)
(301)	A	Chaugfor - as 2 (227)	(339)	A	Miss Switch - as 2 (246)
(301)	A	Chaugfor - as 2 (227)	(340)	A	Miss Switch - as 2 (246)
(301)	A	Chaugfor - as 2 (227)	(341)	A	Miss Switch - as 2 (246)
(301)	A	Chaugfor - as 2 (227)	(342)	A	Miss Switch - as 2 (246)
(301)	A	Chaugfor - as 2 (227)	(343)	A	Miss Switch - as 2 (246)
(301)	A	Chaugfor - as 2 (227)	(344)	A	Miss Switch - as 2 (246)
(301)	A	Chaugfor - as 2 (227)	(345)	A	Miss Switch - as 2 (246)
(301)	A	Chaugfor - as 2 (227)	(346)	A	Miss Switch - as 2 (246)
(301)	A	Chaugfor - as 2 (227)	(347)	A	Miss Switch - as 2 (246)
(301)	A	Chaugfor - as 2 (227)	(348)	A	Miss Switch - as 2 (246)
(301)	A	Chaugfor - as 2 (227)	(349)	A	Miss Switch - as 2 (246)
(301)	A	Chaugfor - as 2 (227)	(350)	A	Miss Switch - as 2 (246)
(301)	A	Chaugfor - as 2 (227)	(351)	A	Miss Switch - as 2 (246)
(301)	A	Chaugfor - as 2 (227)	(352)	A	Miss Switch - as 2 (246)
(301)	A	Chaugfor - as 2 (227)	(353)	A	Miss Switch - as 2 (246)
(301)	A	Chaugfor - as 2 (227)	(354)	A	Miss Switch - as 2 (246)
(301)	A	Chaugfor - as 2 (227)	(355)	A	Miss Switch - as 2 (246)
(301)	A	Chaugfor - as 2 (227)	(356)	A	Miss Switch - as 2 (246)
(301)	A	Chaugfor - as 2 (227)	(357)	A	Miss Switch - as 2 (246)
(301)	A	Chaugfor - as 2 (227)	(358)	A	Miss Switch - as 2 (246)
(301)	A	Chaugfor - as 2 (227)	(359)	A	Miss Switch - as 2 (246)
(301)	A	Chaugfor - as 2 (227)	(360)	A	Miss Switch - as 2 (246)
(301)	A	Chaugfor - as 2 (227)	(361)	A	Miss Switch - as 2 (246)
(301)	A	Chaugfor - as 2 (227)	(362)	A	Miss Switch - as 2 (246)
(301)	A	Chaugfor - as 2 (227)	(363)	A	Miss Switch - as 2 (246)
(301)	A	Chaugfor - as 2 (227)	(364)	A	Miss Switch - as 2 (246)
(301)	A	Chaugfor - as 2 (227)	(365)	A	Miss Switch - as 2 (246)
(301)	A	Chaugfor - as 2 (227)	(366)	A	Miss Switch - as 2 (246)
(301)	A	Chaugfor - as 2 (227)	(367)	A	Miss Switch - as 2 (246)
(301)	A	Chaugfor - as 2 (227)	(368)	A	Miss Switch - as 2 (246)
(301)	A	Chaugfor - as 2 (227)	(369)	A	Miss Switch - as 2 (246)
(301)	A	Chaugfor - as 2 (227)	(370)	A	Miss Switch - as 2 (246)
(301)	A	Chaugfor - as 2 (227)	(371)	A	Miss Switch - as 2 (246)
(301)	A	Chaugfor - as 2 (227)	(372)	A	Miss Switch - as 2 (246)
(301)	A	Chaugfor - as 2 (227)	(373)	A	Miss Switch - as 2 (246)
(301)	A	Chaugfor - as 2 (227)	(374)	A	Miss Switch - as 2 (246)
(301)	A	Chaugfor - as 2 (227)	(375)	A	Miss Switch - as 2 (246)
(301)	A	Chaugfor - as 2 (227)	(376)	A	Miss Switch - as 2 (246)
(301)	A	Chaugfor - as 2 (227)	(377)	A	Miss Switch - as 2 (246)
(301)	A	Chaugfor - as 2 (227)	(378)	A	Miss Switch - as 2 (246)
(301)	A	Chaugfor - as 2 (227)	(379)	A	Miss Switch - as 2 (246)
(301)	A	Chaugfor - as 2 (227)	(380)	A	Miss Switch - as 2 (246)
(301)	A	Chaugfor - as 2 (227)	(381)	A	Miss Switch - as 2 (246)
(301)	A	Chaugfor - as 2 (227)	(382)	A	Miss Switch - as 2 (246)
(301)	A	Chaugfor - as 2 (227)	(383)	A	Miss Switch - as 2 (246)
(301)	A	Chaugfor - as 2 (227)	(384)	A	Miss Switch - as 2 (246)
(301)	A	Chaugfor - as 2 (227)	(385)	A	Miss Switch - as 2 (246)
(301)	A	Chaugfor - as 2 (227)	(386)	A	Miss Switch - as 2 (246)
(301)	A	Chaugfor - as 2 (227)	(387)	A	Miss Switch - as 2 (246)
(301)	A	Chaugfor - as 2 (227)	(388)	A	Miss Switch - as 2 (246)
(301)	A	Chaugfor - as 2 (227)	(389)	A	Miss Switch - as 2 (246)
(301)	A	Chaugfor - as 2 (227)	(390)	A	Miss Switch - as 2 (246)
(301)	A	Chaugfor - as 2 (227)	(391)	A	Miss Switch - as 2 (246)
(301)	A	Chaugfor - as 2 (227)	(392)	A	Miss Switch - as 2 (246)
(301)	A	Chaugfor - as 2 (227)	(393)	A	Miss Switch - as 2 (246)
(301)	A	Chaugfor - as 2 (227)	(394)	A	Miss Switch - as 2 (246)
(301)	A	Chaugfor - as 2 (227)	(395)	A	Miss Switch - as 2 (246)
(301)	A	Chaugfor - as 2 (227)	(396)	A	Miss Switch - as 2 (246)
(301)	A	Chaugfor - as 2 (227)	(397)	A	Miss Switch - as 2 (246)
(301)	A	Chaugfor - as 2 (227)	(398)	A	Miss Switch - as 2 (246)
(301)	A	Chaugfor - as 2 (227)	(399)	A	Miss Switch - as 2 (246)
(301)	A	Chaugfor - as 2 (227)	(400)	A	Miss Switch - as 2 (246)
(301)	A	Chaugfor - as 2 (227)	(401)	A	Miss Switch - as 2 (246)
(301)	A	Chaugfor - as 2 (227)	(402)	A	Miss Switch - as 2 (246)
(301)	A	Chaugfor - as 2 (227)	(403)	A	Miss Switch - as 2 (246)
(301)	A	Chaugfor - as 2 (227)	(404)	A	Miss Switch - as 2 (246)
(301)	A	Chaugfor - as 2 (227)	(405)	A	Miss Switch - as 2 (246)
(301)	A	Chaugfor - as 2 (227)	(406)	A	Miss Switch - as 2 (246)
(301)	A	Chaugfor - as 2 (227)	(407)	A	Miss Switch - as 2 (246)
(301)	A	Chaugfor - as 2 (227)	(408)	A	Miss Switch - as 2 (246)
(301)	A	Chaugfor - as 2 (227)	(409)	A	Miss Switch - as 2 (246)
(301)	A	Chaugfor - as 2 (227)	(410)	A	Miss Switch - as 2 (246)
(301)	A	Chaugfor - as 2 (227)	(411)	A	Miss Switch - as 2 (246)
(301)	A	Chaugfor - as 2 (227)	(412)	A	Miss Switch - as 2 (246)
(301)	A	Chaugfor - as 2 (227)	(413)	A	Miss Switch - as 2 (246)
(301)	A	Chaugfor - as 2 (227)	(414)	A	Miss Switch - as 2 (246)
(301)	A	Chaugfor - as 2 (227)	(415)	A	Miss Switch - as 2 (246)
(301)	A	Chaugfor - as 2 (227)	(416)	A	Miss Switch - as 2 (246)
(301)	A	Chaugfor - as 2 (227)	(417)	A	Miss Switch - as 2 (246)
(301)	A	Chaugfor - as 2 (227)	(418)	A	Miss Switch - as 2 (246)
(301)	A	Chaugfor - as 2 (227)	(419)	A	Miss Switch - as 2 (246)
(301)	A	Chaugfor - as 2 (227)	(420)	A	Miss Switch - as 2 (246)
(301)	A	Chaugfor - as 2 (227)	(421)	A	Miss Switch - as 2 (246)
(301)	A	Chaugfor - as 2 (227)	(422)	A	Miss Switch - as 2 (246)
(301)	A	Chaugfor - as 2 (227)	(423)	A	Miss Switch - as 2 (246)
(301)	A	Chaugfor - as 2 (227)	(424)	A	Miss Switch - as 2 (246)
(301)	A	Chaugfor - as 2 (227)	(425)	A	Miss Switch - as 2 (246)
(301)	A	Chaugfor - as 2 (227)	(426)	A	Miss Switch - as 2 (246)
(301)	A	Chaugfor - as 2 (227)	(427)	A	Miss Switch - as 2 (246)
(301)	A	Chaugfor - as 2 (227)	(428)	A	Miss Switch - as 2 (246)
(301)	A	Chaugfor - as 2 (227)	(429)	A	Miss Switch - as 2 (246)
(301)	A	Chaugfor - as 2 (227)	(430)	A	Miss Switch - as 2 (246)
(301)	A	Chaugfor - as 2 (227)	(431)	A	Miss Switch - as 2 (246)
(301)	A	Chaugfor - as 2 (227)	(432)	A	Miss Switch - as 2 (246)
(301)	A	Chaugfor - as 2 (227)	(433)	A	Miss Switch - as 2 (246)
(301)	A	Chaugfor - as 2 (227)	(434)	A	Miss Switch - as 2 (246)
(301)	A	Chaugfor - as 2 (227)	(435)	A	Miss Switch - as 2 (246)
(301)	A	Chaugfor - as 2 (227)	(436)	A	Miss Switch - as 2 (246)
(301)	A	Chaugfor - as 2 (227)	(437)	A	Miss Switch - as 2 (246)
(301)	A	Chaugfor - as 2 (227)	(438)	A	Miss Switch - as 2 (246)
(301)	A	Chaugfor - as 2 (227)	(439)	A	Miss Switch - as 2 (246)
(301)	A				

- 1. First Set. (11) Unnumbered Cards (continued)
- 4. A (P, standing by rock, legs crossed, playing mandolin) - as Lester (239)
- 5. A (P, standing, military uniform, arms folded, looking at camera) - as Harrison (244)
- 6. B (P, two girls in ballet costume, one falling back in E/arm of second) - as Stillinger (115) and without caption (286)

2. Second Set. Duke Set D76-61-2. "Cross-Out Cigarettes are the Best" in script in design, number preceded by "No.", and caption in printed capitals, in margin at base, see Fig. Xc2/145-2. Style is very similar to 1C (see illustration at Fig. Xc2/145-1C), but inscription in design includes words "... are the Best" and number is preceded by "No." 66 x 35. Two different subjects known as No. 132, and 10.

- 1. Agnes Polson - as 3 (85)
- 2. Miss Theo
- 3. Fanny Rice
- 4. Pauline Hall - as 3 (122)
- 5. Ruby Melville
- 6. Pauline Hall - as 3 (122)
- 7. Ruby Melville
- 8. Pauline Hall
- 9. Josie Hall
- 10. Kate Vaughn
- 11. Kate Vaughn
- 12. Miss Broughton - as 4 (145)
- 13. Mrs. Roach
- 14. Mrs. St. John
- 15. Miss Woodworth - as 1 (92)
- 16. Lillian Russell
- 17. Annie Sutherland
- 18. Lillian Grubb - as 4 (94)
- 19. Adelaide Detton
- 20. Agnes Huntington - as 4 (93)
- 21. Violet Cameron - as 4 (105)
- 22. Emma Carson - as 4 (187)
- 23. Mrs. Langtry
- 24. Kathleen Lynn
- 25. Ada Richmond
- 26. Annie Leslie - as 1 (331)
- 27. Sadie Martinot - as 1 (142), 4 (4)
- 28. Miss Broughton (?)
- 29. Miss Jensen
- 30. Edith Kingdon - as 4 (16)
- 31. Polly Winer
- 32. Grace Wilson
- 33. Louise Dempsey
- 34. Jennie McNulty - as 4 (23)
- 35. Fella Sisters
- 36. Lillian Russell - as 4 (132)
- 37. Lillian Russell
- 38. Lillian Russell
- 39. Lillian Russell
- 40. Lillian Russell
- 41. Lillian Russell
- 42. Lillian Russell
- 43. Lillian Russell
- 44. Lillian Russell
- 45. Lillian Russell
- 46. Lillian Russell
- 47. Lillian Russell
- 48. Lillian Russell
- 49. Lillian Russell
- 50. Lillian Russell
- 51. Lillian Russell
- 52. Lillian Russell
- 53. Lillian Russell
- 54. Lillian Russell
- 55. Lillian Russell
- 56. Lillian Russell
- 57. Lillian Russell
- 58. Lillian Russell
- 59. Lillian Russell
- 60. Lillian Russell
- 61. Lillian Russell
- 62. Lillian Russell
- 63. Lillian Russell
- 64. Lillian Russell
- 65. Lillian Russell
- 66. Lillian Russell
- 67. Lillian Russell
- 68. Lillian Russell
- 69. Lillian Russell
- 70. Lillian Russell
- 71. Lillian Russell
- 72. Lillian Russell
- 73. Lillian Russell
- 74. Lillian Russell
- 75. Lillian Russell
- 76. Lillian Russell
- 77. Lillian Russell
- 78. Lillian Russell
- 79. Lillian Russell
- 80. Lillian Russell
- 81. Lillian Russell
- 82. Lillian Russell
- 83. Lillian Russell
- 84. Lillian Russell
- 85. Lillian Russell
- 86. Lillian Russell
- 87. Lillian Russell
- 88. Lillian Russell
- 89. Lillian Russell
- 90. Lillian Russell
- 91. Lillian Russell
- 92. Lillian Russell
- 93. Lillian Russell
- 94. Lillian Russell
- 95. Lillian Russell
- 96. Lillian Russell
- 97. Lillian Russell
- 98. Lillian Russell
- 99. Lillian Russell
- 100. Lillian Russell
- 101. Lillian Russell
- 102. Lillian Russell
- 103. Lillian Russell
- 104. Lillian Russell
- 105. Lillian Russell
- 106. Lillian Russell
- 107. Lillian Russell
- 108. Lillian Russell
- 109. Lillian Russell
- 110. Lillian Russell
- 111. Lillian Russell
- 112. Lillian Russell
- 113. Lillian Russell
- 114. Lillian Russell
- 115. Lillian Russell
- 116. Lillian Russell
- 117. Lillian Russell
- 118. Lillian Russell
- 119. Lillian Russell
- 120. Lillian Russell
- 121. Lillian Russell
- 122. Lillian Russell
- 123. Lillian Russell
- 124. Lillian Russell
- 125. Lillian Russell
- 126. Lillian Russell
- 127. Lillian Russell
- 128. Lillian Russell
- 129. Lillian Russell
- 130. Lillian Russell
- 131. Lillian Russell
- 132. Lillian Russell
- 133. Lillian Russell
- 134. Lillian Russell
- 135. Lillian Russell
- 136. Lillian Russell
- 137. Lillian Russell
- 138. Lillian Russell
- 139. Lillian Russell
- 140. Lillian Russell
- 141. Lillian Russell
- 142. Lillian Russell
- 143. Lillian Russell
- 144. Lillian Russell
- 145. Lillian Russell
- 146. Lillian Russell
- 147. Lillian Russell
- 148. Lillian Russell
- 149. Lillian Russell
- 150. Lillian Russell
- 151. Lillian Russell
- 152. Lillian Russell
- 153. Lillian Russell
- 154. Lillian Russell
- 155. Lillian Russell
- 156. Lillian Russell
- 157. Lillian Russell
- 158. Lillian Russell
- 159. Lillian Russell
- 160. Lillian Russell
- 161. Lillian Russell
- 162. Lillian Russell
- 163. Lillian Russell
- 164. Lillian Russell
- 165. Lillian Russell
- 166. Lillian Russell
- 167. Lillian Russell
- 168. Lillian Russell
- 169. Lillian Russell
- 170. Lillian Russell
- 171. Lillian Russell
- 172. Lillian Russell
- 173. Lillian Russell
- 174. Lillian Russell
- 175. Lillian Russell
- 176. Lillian Russell
- 177. Lillian Russell
- 178. Lillian Russell
- 179. Lillian Russell
- 180. Lillian Russell
- 181. Lillian Russell
- 182. Lillian Russell
- 183. Lillian Russell
- 184. Lillian Russell
- 185. Lillian Russell
- 186. Lillian Russell
- 187. Lillian Russell
- 188. Lillian Russell
- 189. Lillian Russell
- 190. Lillian Russell
- 191. Lillian Russell
- 192. Lillian Russell
- 193. Lillian Russell
- 194. Lillian Russell
- 195. Lillian Russell
- 196. Lillian Russell
- 197. Lillian Russell
- 198. Lillian Russell
- 199. Lillian Russell
- 200. Lillian Russell



Fig. Xc2/145-2

- 2. Second Set (continued)
- 104. Adelaide Langdon
- 105. Miss Angela
- 106. Billie Barlow - as 3 (10)
- 107. Fanny Rice
- 108. Fanny Rice - as 4 (17)
- 109. Clara Ellison
- 110. Helen Adelaide
- 111. Annie Sutherland - as 1 (216)
- 112. Ida Bell
- 113. Miss Theo - as 1 (146)
- 114. Louise Dempsey
- 115. Ray Templeton - as 1 (112), 3 (77)
- 116. Marnie Palmer - almost as 4 (116)
- 117. Alice Harrison - as No. 5 in 1 (41)
- 118. Nellie Harding
- 119. Miss Jarbeau - as 1 (152)
- 120. Miss Summerville
- 121. Frankie Kemble
- 122. Miss Farrall
- 123. Lillian Grubb - as 4 (6)
- 124. The Barber (P, hands over head)
- 125. - as 1 (2)
- 126. Sadie Martinot - as 1 (121)
- 127. Lillian Russell - as 1 (113), 3 (13)
- 128. Miss Westberry - as 1 (37)
- 129. Annie Sutherland - as 1 (219)
- 130. Miss Hall - as 1 (231)
- 131. Alice Harrison
- 132. Lillian Russell
- 133. Miss Douglas - as 1 (192)
- 134. Jennie McNulty - as 1 (141), 4 (110)
- 135. Ray Templeton - as 1 (120), 3 (65)
- 136. Lydia Thompson - as 1 (87)
- 137. Edna Courtney - as 1 (85)
- 138. Miss Cummings
- 139. Annie Pickley - as 1 (60)
- 140. Miss Crowbridge - as 1 (199)
- 141. Annie Sutherland - as 1 (149)
- 142. Annie Sutherland - as 1 (34), (84)
- 143. Mollie Fuller - as 1 (89)
- 144. Mrs. Langtry - as 1 (144)
- 145. Miss Crowbridge - as 1 (29)
- 146. Miss Crowbridge - as 1 (198)
- 147. Annie Rose - as 1 (51)
- 148. Marnie Dupree - as 1 (237)
- 149. Miss Ada Richmond - as 1 (122)
- 150. Miss Mollie Fuller - as 1 (165), 3 (27)
- 151. Sadie Cortelyou - as 3 (123), and as Lyon 1 (254)
- 152. Fanny Rice - as 1 (173), 3 (6)
- 153. Clara Pryorose - as 1 (13) & (233)
- 154. Emma Carson - as 1 (165)
- 155. Miss Jensen
- 156. Billie Barlow - as 1 (133), 4 (74)
- 157. Miss Long
- 158. Helen Greyson - as 1 (21), 3 (3)
- 159. Victoria Jarbeau - as 1 (78)
- 160. Kate Hart
- 161. Lily Depree - as 1 (67)
- 162. Jennie McNulty
- 163. Mlle. Jeanne
- 164. Miss Montague - as 1 (59)
- 165. Kate Bartlett - as 1 (82)
- 166. Annie Sutherland - as 1 (217)
- 167. Miss Simpson - as 1 (148)
- 168. Miss Sheed
- 169. Miss Devoe
- 170. Maud Branscomb - as 4 (25)
- 171. Nellie Lankelle
- 172. Miss Dana
- 173. Mrs. Victoria Sheelling - as 4 (118)
- 174. Miss Palmer - as 4 (122)
- 175. Ruth Stetson - as 4 (96)
- 176. Miss Myrbo - as 1 (32)
- 177. Miss Templeton - as 1 (232)
- 178. Alma Stanley
- 179. Miss Farrell - as 3 (14), 4 (191)
- 180. Lillian Russell - as 1 (109)
- 181. Miss Rhoel - as 4 (26)
- 182. Miss Falkner
- 183. Gertrude Gardner - as 1 (214), and as Viola Bridgess 3 (61)
- 184. Miss Leo - as 1 (155)
- 185. Alma Stanley - as 1 (150)
- 186. Morris & Farrall
- 187. Orcece Wilson - as 1 (158), 4 (163)
- 188. Pauline Hall - as 3 (9), 4 (70)
- 189. Ray Templeton - as 1 (151)
- 190. Miss Bavenport - as 1 (1), (10), (100), (105), also as 3 (25)
- 191. Miss Leavelster - as 1 (196), 3 (16)

Xc2/145 PHOTOGRAPHIC CARDS - DUKE (continued)

2. Second Set (continued)

- | | | | |
|-------|---|-------|--|
| (201) | Goodwin & Johnson - as 1 (50) & (254) | (230) | Rose Coghlin - as 1 (145) |
| (202) | Mrs. Anderson - as 1 (170) | (231) | Happy Fair |
| (203) | Mrs. Etkon - as 1 (26) | (232) | Pauline Markham - as 1 (335) |
| (204) | Mabel Mitchell - as 1 (25) | (233) | Mrs. Powell - as 1 (339) |
| (205) | Minnie Dupree (seated, parasol over shoulder) - as 1 (12) | (234) | Lilla Blaw - as 1 (230) |
| (206) | Mrs. Wilson - as 1 (170) | (235) | Mrs. Throp - as 1 (340) |
| (207) | Pauline Hall - as 1 (80) | (236) | Mrs. Lawrence |
| (208) | Mrs. de Sottes - as 1 (47) | (237) | May Young - as 1 (327) |
| (209) | Key Steele | (238) | Carrie Wallace - as 1 (329) |
| (210) | Lillian Russell - as 1 (67), 4 (5) & (153) | (239) | Mrs. Fox - as 1 (319) |
| (211) | Lillian Russell - as 1 (67), 4 (5) & (153) | (240) | Mollie Fuller - as 1 (309) |
| (212) | Mrs. Primrose - as 1 (241) | (241) | Lillian Gubb - as 1 (312) |
| (213) | Mrs. Sutherland - as 1 (143), 4 (190) | (242) | Mrs. Milton - as Ven Ossen, 4 (107) |
| (214) | Mrs. Sutherland - as 1 (143), 4 (190) | (243) | Mrs. Van Ness - as 1 (315) |
| (215) | Ada Richmond | (244) | Ida Malle |
| (216) | Millie Patoret | (245) | Ruth Stetson - as 1 (307), and as Agnes Nelotte, 3 (114) |
| (217) | Helen Beardslay | (246) | Louise Pritch - as 1 (304) |
| (218) | Mrs. Fane | (247) | Mrs. Verona |
| (219) | Mrs. Theo - as 1 (210), 3 (112) | (248) | Mrs. Verona |
| (220) | Carrie Coote | (249) | Ruby Melville |
| (221) | Mrs. Myerka | (250) | Miss Butler - as Georgie Gardner, 4 (69) |
| (222) | Mrs. Myerka | (251) | Miss Butler - as Georgie Gardner, 4 (69) |
| (223) | Mrs. Myerka | (252) | Sadie Courtelyou - as 1 (321) |
| (224) | Mrs. Myerka | (253) | May Bartell - as 1 (326) |
| (225) | Mrs. Myerka | (254) | May Bartell - as 1 (337) |
| (226) | Mrs. Myerka | (255) | May Bartell - as 1 (337) |
| (227) | Daisy Stanley | (256) | Daisy Murdoch - as 1 (300), 3 (11) |
| (228) | Edith Kingdon | (257) | Miss Ball |
| (229) | Edith Kingdon | (258) | Miss Mills - as 1 (350) |
| | | (259) | Annie Perkins |

3. Third Set. Duke Set D76-61-3. "Duke's Cameo Cigarettes" in design, number and caption in margin at base, see Fig. Xc2/145-3. Size very variable (a) about 67 x 37 (b) about 61 x 38 including subjects with caption in very small print. Nos. 1/148 known, excluding Nos. 16, 75 and 104.



Fig. Xc2/145-3

Xc2/145 PHOTOGRAPHIC CARDS - DUKE (continued)

3. Third Set (continued)

- | | | | |
|-------|--|-------|---|
| (223) | Russell | (66) | Tonie Contje |
| (224) | Bastings | (67) | Verona |
| (225) | Clara Davenport - as 1 (1), (10), (100), 1 (105) and 2 (199) | (68) | Ira Malle |
| (226) | Sadie Martindot | (69) | Verona |
| (227) | Mollie Fuller - as 1 (165), 2 (153) | (70) | Louise Pauline |
| | | (71) | Lotha - as 4 (22) |
| | | (72) | Queen Vassar |
| | | (73) | Annie Sutherland |
| | | (74) | L. Russell |
| (28) | Bruna | (75) | Irene Verona |
| (29) | H. Kingdon | (76) | Fay Templeton - as 1 (112), 2 (118) |
| (30) | Ellen Terry as Margaret | (77) | Fay Templeton - as 1 (112), 2 (118) |
| (31) | Annie Leslie | (78) | L. Russell |
| (32) | Annie Robe | (79) | Lilla Farrell |
| (33) | Annie Leslie | (80) | Kyrally Troupe |
| (34) | Annie Pixley | (81) | Louise Pauline |
| (35) | Reta Chase | (82) | Millie Debauche |
| (36) | Lillian Russell | (83) | Lydia Thompson |
| (37) | Doe Lascella | (84) | Jarbeau |
| (38) | Olga Brandon | (85) | Agnes Polson - as 2 (1) |
| (39) | E. Carrington | (86) | Mrs. Cleveland |
| (40) | Olga Brandon | (87) | Agnes Polson - as 2 (67), 4 (54) |
| (41) | Verona Jarbeau | (88) | Kate Forsyth |
| (42) | Certrude Gardner | (89) | Irene Verona |
| (43) | Verona Jarbeau | (90) | Yand Starford |
| (44) | Jessie Stoddart - as 2 (69) | (91) | Mary Jansen |
| (45) | Gurtrude Gardner | (92) | Lydia Thompson |
| (46) | G. Gardner | (93) | Irene Verona |
| (47) | Lillian Russell | (94) | Fanny Reeves |
| (48) | Leila Oberster - as No. 4, Fig. W62-13, RB26 | (95) | Viola Hart |
| (49) | Fanny Corey | (96) | Viola Cameron |
| (50) | Frankie Kimble | (97) | Rose Coghlin |
| (51) | Annie Sutherland | (98) | Ada Richmond |
| (52) | Lilla Farrell | (99) | Alma S. Stanley |
| (53) | Annie Pixley | (100) | Sadie Martindot |
| (54) | Kate Davis | (101) | Jarbeau |
| (55) | Hillie Barlow - as 2 (96) | (102) | Y. Jarbeau |
| (56) | Bianche Batton | (103) | Louise Pauline - as 1 (201) |
| (57) | Bellie Barlow | (104) | F. Johnson |
| (58) | Hart - Sommerville | (105) | Mollie Fuller |
| (59) | Olga Brandon | (106) | St John |
| (60) | Jennie Froeland | (107) | Belle Druwhart |
| (61) | Viola Bridges - as 1 (214), and as Gertrude Gardner, 2 (189) | (108) | Luethe |
| (62) | The Modern Puck | (109) | Kodjenska |
| (63) | Yeamene & Farrell | (110) | Edie |
| (64) | Agnes Booth | (111) | Theo - Full length version of 1 (210) & 2 (220) |
| (65) | Fay Templeton - as 1 (120), 2 (136) | (112) | Josephine Stone |
| | | (113) | Josephine Stone |

4. Fourth Set. Duke Set D76-61-4. "Duke Cigarettes are the Best" in design, number and caption at base, see Fig. Xc2/145-4. 65-67 x 35.



Fig. Xc2/145-4

4. Fourth Set (continued)

(1) <i>May Fielders</i> Miss Lillian Grubb	(62) Ida Vernon - as Ethel Selwyn, 2 (54)
(2) Grace Barton	(63)
(3) Warrnot - as 1 (142), 2 (37)	(64) Marion Gilmore
(4) Lillian Russell - as (153), also as 1 (67) & 2 (211)	(65) Louise Allen
(5) Lillian Grubb - as 2 (126)	(66)
(6) Lillian Grubb - as 2 (126)	(67) Maud Clifton
(7) Miss Zeffie Elmhurst	(68) Sadie Roosevelt - as Umer, 1 (110)
(8) Letitia	(69) George Gardner - as Miss Dutton, 2 (251)
(9) Lillian Russell - as 2 (58)	(70) Pauline Hall - as as 2 (195), 3 (9)
(10) Emma Tuck	(71) Rose Wilson
(11) <i>13-14-15-16</i> Kingdon	(72) Mlle Paule
(12) Southernland - as 1 (220)	(73)
(13) Kingdon - as 2 (41)	(74) Billie Barlow - as 1 (133), 2 (159)
(14) Fanny Rice - as 2 (108)	(75) L. Russell
(15) Florida St. John - as 2 (68)	(76) Patt
(16) Sadie Martinot - as 2 (66)	(77) Miss Maida Oregon
(17) Almee	(78) Duillos
(18) Lotta - as 3 (71)	(79) Elisabeth de Bouffe
(19) Jennie McNulty - as 2 (47)	(80)
(20) Miss Woodworth - as 1 (98), 2 (71)	(81) Ruth Stetson
(21) Maud Branscomb - as 2 (176)	(82) <i>X89 Marie Kemble</i> Patt
(22) Bertha Ricci - as 2 (187)	(83) Casperine Group
(23) Nellie Harding	(84)
(24) Adelaide Neilson	(91) Miss Agnes Huntington - as 2 (28)
(25) Adelaide Neilson - as 2 (74)	(92) Lillian Grubb - as 2 (26)
(26) Laura Sherrington	(93) Clara Ellison - as (164) & 2 (81)
(27) Kate Castleton - as 2 (62)	(94) Ruth Stetson - as 2 (181)
(28) Frankie Kemble	(95) Kate Castleton - as 1 (53)
(29) <i>Miss Faine</i> Kitty Wilson	(96) Lillian Russell - as 2 (94)
(30) Mrs. Langtry	(97) 100
(31) Frankie Kemble	(98) 101
(32) Kate Castleton - as 2 (62)	(99) 102
(33) Frankie Kemble	(100) 103
(34) Kate Castleton - as 2 (62)	(101) Daughters of the Flow
(35) Frankie Kemble	(102) Lizzie Hight
(36) <i>Miss Faine</i> Kitty Wilson	(103) Violet Cameron - as 2 (30)
(37) Joale Hall	(104) Van Osten - as Miss Milton, 2 (242)
(38) Ida Mülle	(105) McNulty - as 1 (141), 2 (135)
(39) Miss Floyd	(106) Jarbeau
(40) Emma Carson	(107) 108
(41) Miss Patricia	(108) 109
(42) Madeline Lucette	(109) 110
(43) Madeline Lucette	(110) 111
(44) Miss Patricia	(111) 112
(45) Madeline Lucette	(112) 113
(46) Madeline Lucette	(113) 114
(47) Miss Patricia	(114) 115
(48) Madeline Lucette	(115) 116
(49) Adelaide Neilson	(116) Minnie Palmer - almost as 2 (119)
(50) Everson & Cleyton	(117) Minnie Palmer - almost as 2 (59)
(51) Beaumont	(118) Victoria Schilling - as 2 (179)
(52) Agnes Folsom - as 2 (87), 3 (87)	(119) Jarbeau - as 1 (220)
(53) Sadie Martinot - as 3 (144)	(120) 121
(54) Mlle. Bocoille	(121) 122
(55) Madeline Pozzo	(122) Naomie Palmer - as 2 (180)
(56) Adelina Patti	(123) 123
(57) Adelina Patti	(124) Jansen

4. Fourth Set (continued)

(124) Helen Layton	(159) Miss Helen Stardish
(125) Mlle. Perrine	(160) Lotta
(126) Kirtaly Throupe	(161) Belle Wilson - as 1 (158), 2 (194)
(127) Lillian Russell - as 2 (49)	(162) Clara Ellison - as (95) & 2 (81)
(128) <i>Billie Barlow</i> Conit	(163) Miss Williard
(129) 130	(164) Nooganning - as 1 (78) & (113)
(130) 131	(165) Claire Boniface - as Johnson, 1 (142) & (145)
(131) 132	(166) Annie Harrie
(132) 133	(167) E. Laboulette
(133) 134	(168) Fay Minnette
(134) 135	(169) Louise Perkins
(135) 136	(170) Lucette Yickers
(136) Violet Cameron - as 3 (131)	(171) Founds and Umer - as 2 (73)
(137) Emma Carson	(172) Zele Durand
(138) <i>W. W. Moore - 7-10-11-12-13-14-15-16-17-18-19-20-21-22-23-24-25-26-27-28-29-30-31-32-33-34-35-36-37-38-39-40-41-42-43-44-45-46-47-48-49-50-51-52-53-54-55-56-57-58-59-60-61-62-63-64-65-66-67-68-69-70-71-72-73-74-75-76-77-78-79-80-81-82-83-84-85-86-87-88-89-90-91-92-93-94-95-96-97-98-99-100-101-102-103-104-105-106-107-108-109-110-111-112-113-114-115-116-117-118-119-120-121-122-123-124-125-126-127-128-129-130-131-132-133-134-135-136-137-138-139-140-141-142-143-144-145-146-147-148-149-150-151-152-153-154-155-156-157-158</i>	(173) Eveline Granville
(139) 139	(174) Reeves
(140) 140	(175) Emma Carson - as 2 (31)
(141) 141	(176) Lella Farrell - as 2 (185), 3 (14)
(142) 142	(177) Miss Cleward
(143) 143	(178) 179
(144) 144	(179) 180
(145) 145	(180) 181
(146) 146	(181) 182
(147) 147	(182) 183
(148) 148	(183) 184
(149) 149	(184) 185
(150) 150	(185) 186
(151) 151	(186) 187
(152) 152	(187) 188
(153) 153	(188) 189
(154) 154	(189) 190
(155) 155	(190) 191
(156) 156	(191) 192
(157) 157	(192) 193
(158) 158	(193) 194

5. Fifth Set. Duke Set D/6-61-5. Brand and all working at base. 67-68 x 35. Two different subjects at many numbers.

- A. "Cross-Cut Cigarettes are the Best" at base, see Fig. Xc2/145-5A. Several different styles, last line "W. Duke, Sons & Co." in lettering about 16/17 m/m, 18/19 m/m or 20/21 m/m long. No. 701 is known with brand wording in a different curved style.
- B. "Duke's Cameo Cigarettes are the Best" at base, see Fig. Xc2/145-5B.
- C. "Duke Cigarettes are the Best" at base, see Fig. Xc2/145-5C. Three different styles, with "W. Duke, Sons & Co." in lettering about 18 m/m, 20 m/m or 22 m/m long.

(1) Numbered Cards

- (12) Bertha Fish* (25) Annie Pixley*
(14) Belle Archer* (32) Miss Williams*

* all printing C



Fig. Xc2/145-5A

Xo2/145 PHOTOGRAPHIC CARDS - DIXIE (continued)

5. Fifth Set. (1) Numbered Cards (continued)

145	B	Ida Moore	199	B	Corra Vinlarav
146	B	Carrie Surrey	200	C	Lillian Grubb
147	B	Dora Seneca	201	BC	Dina Mare
148	B	Salie Landon	201	C	Miss Dempsey
149	B	Lizzie Marcy	202	C	Flore Wood
150	BC	Adelina Detchon	203	B	Anna Parole
151	BC	Stella Sawyer	203	C	Miss Dempsey
152	BC	Beatrice de Malle	204	BC	Clara Mart
153	BC	Julia Verene	205	C	Maude Waldenmere
154	B	Minnie Young	206	C	Maude Waldenmere
155	BC	Mamie Burke	206	BC	Lizzie Hughes
156	BC	Theo	207	C	Joie Hall
157	BC	Sarah Swift	207	BC	Lillian Grubb
158	B	Janeau Dryden	208	C	Joie Hall
159	BC	Lena Philburt	208	B	Lizzie Harold
160	B	Jennie Newton	209	BC	Vero & Clifton
161	B	Clara Rambold	209	BC	Marie Burroughs
162	B	Sadie Howe	210	C	Beatrice & Malle
163	B	Dora Price	211	C	Marie Burroughs
164	B	Sadie Bruno	211	C	Marie Burroughs
165	BC	Elain Gaunfor	212	B	Lulu Deza
166	BC	Lillian Grubb	212	C	Marie Burroughs
167	BC	Rennie Mutton	213	B	Frances Donalds
168	B	Jennelle Malt	213	C	Marie Burroughs
169	B	Jennie McNulty	214	BC	Mirra Orloff
170	B	Lizzie McCall	214	BC	Deloy Wardock
171	BC	Lizzie Hughes	215	B	Frances Marion
172	BC	Minnie Pluturch	215	C	Deloy Wardock
173	B	Sharcy Pal Roy	216	B	Sophia Bruno
174	B	Lillie Oicotte	216	C	Deloy Wardock
175	BC	Ballie Burns	217	B	Charlotte Perry
176	BC	Lizzie Howe	217	C	Deloy Wardock
177	BC	Annie Summerville	218	B	Deloy Wardock
178	B	Irene Yemona	218	C	Deloy Wardock
179	B	Delille Joyce	219	B	Deloy Wardock
180	B	James Brown Pottom	220	C	Deloy Wardock
181	B	Marie Winner	220	A	Miss Reves
182	BC	Katie Powell	221	A	Mlle Garland
183	BC	Mlle. Marson	221	B	Lillian Land
184	B	De Searle	221	C	Ploy Crowell
185	B	Jeanie Ames	222	A	Mlle Appleton
186	BC	Jeanie Ames	222	A	Nadage Dorree
187	BC	Jeanie Ames	223	A	Wm Hartwig
188	BC	Jeanie Ames	223	A	Nadage Dorree
189	B	(F, standing)	223	C	Charlotte Pittell
189	B	(F, seated)	228	C	Marie Burroughs
190	B	Key Field	229	C	Nadage Dorree
191	B	Lizzie Harold	230	C	Key Johnston
192	BC	Maud Gran	231	C	Maud Granger
193	B	Mabel Runnels	232	C	Beidon
194	BC	Rosine Roski	233	C	Christian
194	BC	Lulu Heese	235	C	Adelaide Emerson
194	BC	Lulu Heese	236	C	Mile Bonbon
194	BC	Lulu Heese	237	C	Mile Dowell
197	B	Mamie Gordon	237	C	Rose Howell
198	B	Dollie Haekin	238	C	Miss Kirker



Fig. Xo2/145-5B



Fig. Xo2/145-50

Xo2/145 PHOTOGRAPHIC CARDS - DIXIE (continued)

5. Fifth Set. (1) Numbered Cards (continued)

299	C	Belle Archer	302	A	Emily Melville	350	A	Dora Lee
280	C	Frankie Kemble	322	AC	Miss, Hatch	350	B	Miss Hall,
281	C	Hattie Starr	323	B	Mlle Besocoll			& Waldenmere
			323	BC	Kitthe Rhoades	351	A	Carrie Rambold
300	BC	Annie Robe	324	A	Bille Barlow	352	A	Jonnet Gynase
301	A	Rosa Hersey	324	B	Laura Burt	352	B	Jennie Caler
301	BC	Theo	325	A	Miss Feckwith	352	B	Miss. Campbell
302	A	Bessie Royal	325	BC	Miss Ashard	353	BC	Ruth Stetson
302	B	Mlle. Pervant	325	BC	Laura Burt	354	A	Netta Byron
303	BC	Freultvont	326	BC	Christine Mertins	354	A	Miss. McVickers
304	A	Emelia de Silva	326	BC	Laura Burt	355	A	Nora Savles
304	BC	Jenny Barthe	326	BC	Empire Group	355	A	P. Hall
305	A	Amalie De Bevelise	328	A	Empire Group	356	BC	Eliza Reuself
305	B	M. Ricotti	328	BC	Kirelly Group	356	BC	Elmore
306	A	Carrie Irvine	329	A	Polly Winner	357	A	Theo
306	BC	Irene Varonia	329	BC	Belle Ungunhardt	357	A	Pauline Hall
307	A	Pearl Layster	329	BC	Empire Group	358		
307	BC	H. Javs	330	A	Lulu Mortlser	359	BC	Helle Choeser
308	A	Ireen Bokford	331	A	Von Oastan			(by Hammock)
		(looking l)	331	BC	San Oastan			
		(looking R)	332	A	Empire Group			
308	A	Ireen Bokford	332	B	Dore Wiley	359	BC	Karomet
		(looking R)	333	A	Lulu Korlmer			(by tree trunk)
309	A	Clarsbel De Puyster	333	A	Sarah Dungen	360	A	Corra Jean
		(E/profile)	333	B	Mabel Santley	360	BC	Carrie Perkins
		(L/profile)	334	A	Von Oastan	361	A	Van Oastan
			334	A	Van Oastan	361	BC	Carrie Perkins
309	A	Clarsbel De Puyster	334	A	Eva Barrington	362	A	Augusta Walkup
		(L/profile)	334	A	Clarsbel De Puyster	362	BC	Alloe Arlington
		(R/profile)	334	A	Clarsbel De Puyster			Fig. Xo2/145-53
309	B	Gertrude Maselet	335	AC	Annie Colley	363	A	Nyra Ward
310	B	Mlle. Pralzer	335	B	Leonda Jarow	363	BC	Chappelle Sisters
310	B	Mlle. Pralzer	336	A	Mrs J.B. Potter	364	A	Jennie Walpole
311	A	Marie Dawley	336	BC	Carrie Behr	364	B	Maggie Elaine
311	BC	Battie Robinson	337	A	Emma Hanley	364	B	Florence Baker
312	A	Vera Townsend	337	A	Lillian Grubb	365	A	Elsie Dean
312	B	Mlle. Le Celaur	338	A	Lizzie Hughes	365	BC	(looking R)
313	A	Maud Hewllen	339	A	Irene Verone	366	B	(looking L)
313	BC	Jennie Smith	339	A	Leonda Jarow	367	BC	Lizzie Webster
314	A	Cynthia Granger	340	B	Sarah Steele	368	A	Irene Condot
314	B	Nohalmer	340	A	Mlle Wynadler	368	BC	Marie Williams
315	A	M. Adolise	341	A	Mlle Wynadler	369	BC	(F, seated)
315	B	M. Adolise	342	A	Mlle Wynadler			
316	A	Iolanthe Faulkner	342	A	Mlle Wynadler			
316	A	Jennie Smith	342	A	Mlle Wynadler			
317	A	Victoria Ferris	342	C	Mlle Wynadler			
317	B	Billy	342	C	Mlle Wynadler			
318	B	Annie Teracoote	342	B	Irene Vazonia	371	A	Louise Paulh
		(F, seated)	343	A	Lillian Grub	371	A	Carrie Perkins
			343	B	Mlle, Zephty	372	A	Minnie Farrer
			344	A	Blanche	372	B	Carrie Perkins
			344	B	Mlle. Feron	373	A	Jula Miner
			344	A	Edison	373	B	Miss Willoughby
			345	A	Julie	374	A	Julia Miner
			345	A	Richard Jarow	374	BC	Mary Parke
			346	B	Richard and	375	A	Lilly Conrad
			347	A	Letry	375	BC	Jarben (standing)
			347	BC	Mabel Santley	375	BC	Jarben (seated)
			348	BC	Leonda Jarow	376	A	Mile Knight
			348	BC	Rose Wilson	376	BC	Maggie Chalze
			349	A	Carril Rambold	377	A	Ruby Leonard

5. Fifth Set. (1) Numbered Cards (continued)

X 377	B	Mamie Cerbi	X 523	C	Panny Moor	(574)	
X 378	A	Hellen McDonald	X 524	C	Netta Byron	(575)	
X 378	BC	Ada Kramite	X 525	C	Mrs. Sheridan	(576)	
X 379	B	Carrie Leslie	X 526	C	Miss Hermann	(577)	
X 379	BC	Helen Standish	X 527	C	August Melkup	(578)	
X 380	A	Elen Rosetter	(528)	C	as (362)	(579)	
X 380	BC	Lizette Harold	X 529	C	Joest Gymnase	(580)	
X 381	BC	Sadie Conleyou	X 530	C	as (362)	(581)	
X 382	A	Christvol Heeth	X 530	C	Eliza Reussle	(582)	
X 382	B	Constance	X 531	C	as (356)	(583)	
X 383						(584)	
X 384	AC	Billy Penn	(532)	C	Laura Burt	(585)	
X 384	A	Mile Davenport	X 533	C	Adole Sisters	(586)	
X 385	A	Maud Nixon	X 534	C	Miss Standish	(587)	
X 385	A	Miss McKenzie	X 535	C	Miss Sutherland	(588)	
X 385	A	Pauline Markham	(536)	C	Mrs. Roach	(589)	
X 386	A	Lena Congo	X 537	C	Geraldine Ulmer	(590)	
X 386	BC	Grace Stewart	X 538	C	Martinot	(591)	
X 387	A	Miss Norman	X 539	C	Mary Anderson	(592)	
X 387	BC	Carrie Perkins	(540)	C	Mary Anderson	(593)	
X 387	BC	Miss Gregory	(541)	C	Miss Adelaide	(594)	
X 388	A	Pauline Markham	(542)	C	Detobon		
X 388	BC	Pauline Markham	(542)	C	Miss, Roberts		
X 389	AC	Miss Gattin	(542)	C	Mrs. A. Maddick		
X 389	D	Pauline Markham	(543)	C	Lady Brocke		
X 390	A	Elsie Fettle	(544)	C	Miss, Sutherland		
X 390	BC	Selma Delaro	(545)	C	Geraldine Ulmer		
X 391	A	Miss Hermann	(546)	C	Ceruldine Ulmer		
X 391	B	Kelle Beaumont	(547)	C	Miss Jackson		
X 392	A	Annie Bennett	(548)	C	George Dunning		
X 392	BC	Margie Claitre	(549)	C	Celle Elille		
X 393	A	Della Castro	(549)	C	Ver San Name		
X 393	BC	Maudie Stafford	(550)	C	as (371)		
X 393	BC	Miss Smith	(551)	C	Belle Urquhardt		
X 394	BC	Miss Smith	(552)	C	Miss Thorp		
X 395	BC	Minnie Connor	(553)	C	Laura Burt		
X 395	BC	Minnie Connor	(554)	C	Laura Burt		
X 500	C	Carrie Rumbold	(553)	C	Laura Burt		
X 501	C	Isabella Short	(554)	C	Laura Burt		
X 502	C	Thoe	(555)	C	Laura Burt		
X 503	C	Miss Mckenale	(556)	C	Laura Burt		
X 504	C	Della Castro	(557)	C	Laura Burt		
X 505	C	Pearl Layster	(558)	C	Laura Burt		
X 506	C	Mrs. de Mary	(559)	C	Laura Burt		
X 507	C	Flora Walsh	(560)	C	Laura Burt		
X 508	C	Olga Drandon	(561)	C	Laura Burt		
X 509	C	Miss Lebery	(562)	C	Laura Burt		
X 510	C	Miss Swartz	(563)	C	Laura Burt		
X 511	C	Belle Urquhardt	(564)	C	Laura Burt		
X 512	C	Tolara Faulkner	(565)	C	Laura Burt		
X 513	C	Elthor Hamilton	(566)	C	Laura Burt		
X 514	C	Miss Clement	(567)	C	Laura Burt		
X 515	C	Celle Elille	(568)	C	Laura Burt		
X 516	C	Flora Walsh	(569)	C	Laura Burt		
X 517	C	Laura Wood	(570)	C	Laura Burt		
X 519	C	May Belle Raymond	(571)	C	Laura Burt		
X 520	C	Celle Elille	(572)	C	Laura Burt		
X 521	C	Miss Appleton	(573)	C	Laura Burt		
X 522	C	Landy	(574)	C	Laura Burt		

5. Fifth Set. (1) Numbered Cards (continued)

(625)	A	Ivy Willis	(715)	A	Cecilia Bonfifi	(750)	B	Panny Moles
X 626	A	Belle Urquhardt	(716)	A	Grace Sherwood	(751)	C	Mrs. J.B. Potter
X 627	A	Miss Booth	(717)	A	Laura Burt	(751)	B	Cella Curtis
X 628	AC	Hattie Robbins	(718)	A	Laura Burt	(751)	C	Margaret Mather
X 629	A	Lottie Williams	(719)	A	Laura Burt	(752)	C	Erlie Shannon
X 630	A	Joete Knight	(720)	A	Laura Burt	(753)	C	Kate Stokes
X 631	A	Olga Drandon	(721)	A	Van den Bos	(754)	C	Lillian Russell
X 632	A	Flora Walsh	(722)	A	Panny Moor	(755)	C	Lillian Russell
X 633	A	Celle Elille	(723)	A	Estelle Williams	(756)	B	Miss Perichol
X 634	AC	Miss Werner	(724)	A	Pages "The Mascotte"	(757)	B	Lillian Russell
X 635	AC	Miss Blake	(725)	A	Mrs. Jones	(757)	B	Vernora Jarbeau
X 636	A	Miss Arnold	(726)	A	Miss Greenwood	(758)	B	Louisa Montague
X 637	A	Ivy Willis	(727)	A	Mrs. Sheridan	(759)	B	Miss Mulvey
X 638	A	Miss Clement	(728)	A	Mrs. Greenwood	(760)	B	Erlie Shannon
X 639	A	Pauline Markham	(729)	A	Mrs. Turner	(761)	C	Kate Wilson
X 640	A	Celle Elille	(730)	A	Miss Greenwood	(762)	C	Miss Chasaling
X 641	A	Misses Arnold & Stone	(731)	A	May Johnston	(763)	C	Belle Urquhart
X 642	A	Stone	(732)	A	Miss Ada Webb	(764)	C	"The Highest Bidder"
X 643	A	Hattie Robbins	(733)	A	Miss Harding	(765)	C	Helen Davenport
X 644	A	Ealth Merrill	(734)	A	Miss Greenwood	(766)	B	Lulu Mortimer
X 645	AC	Miss Thorp	(735)	A	Miss Cody	(767)	B	Lizzie Webster
X 646	AC	Miss Lebery	(736)	A	Miss Sheldon	(768)	BC	Theo
(647)	A	Miss De Marey	(737)	A	Miss Vaughn	(769)	B	Louisa Carleton
(701)	A	Miss Ada Webb	(738)	A	Erminie Vaughan	(770)	B	Miss Ricci
X 702	A	Lacy Webb	(739)	A	Erminie Vaughan	(771)	B	Miss Lynne
X 703	A	Ada Webb	(740)	A	Miss Eugene	(772)	C	Panny Rice
X 704	A	Miss Greenwood	(741)	A	Miss Della Biltar	(773)	C	Kate Stokes
X 705	A	Lacy Webb	(742)	A	Miss Della Biltar	(774)	B	Panny Rice
X 706	A	Miss Greenwood	(743)	A	Miss Della Biltar	(775)	B	Panny Rice
X 707	A	Lacy Webb	(744)	A	Miss Della Biltar	(776)	B	Miss Salsana
X 708	A	Miss Ada Webb	(745)	A	Miss Della Biltar	(777)	B	Lillian Russell
X 709	A	Violet Cameron	(746)	A	Miss Della Biltar	(778)	C	Lillian Russell
X 710	A	Diononne	(747)	A	Miss Della Biltar	(779)	C	Lillian Russell
X 711	A	Laura Burt	(748)	A	Miss Della Biltar	(780)	B	Lillian Russell
X 712	A	Miss Adam	(749)	A	Miss Della Biltar			
X 713	A	Landy	(750)	A	Miss Della Biltar			
X 714	A	Agnes Lyndin	(751)	A	Miss Della Biltar			

(11) Unnumbered Cards. Many of these were probably intended to be the subjects not yet known under Nos. 1/144 in (?). 155 known.

1. A Adrian (F), looking I, R/hand holding loose hair by R/shoulder
2. C Lady Alphonsine (F), standing by horn-shaped basket with peacock feathers
3. C Mary Anderson (W), looking upwards, arms at sides, hands just off drape
4. C Belle Archer (R & S), looking at camera, tan-ol-shanter - as 14 in (1)
5. C Fannie Bachelder (F), standing looking at camera, hands back of head
6. C do.
7. C do.
8. C do.
9. C do.
10. C Mrs. Bernard Beere (B, near R/profile, hand across hair with bow at top)
11. AC Miss Belle (F), seated looking R, R/hand on l/leg over R/knee
12. C Miss Blake (F), standing looking down at waist, palm l/hand on hip
13. C Mile, Borris (F), standing looking R, open fan back of head, l/hand on hip
14. C do.
15. AC Annie Boyd (F), standing looking l, about to draw rapier from scabbard

5. Fifth Set. (11) Unnumbered Cards (continued)

16. C Faud Franscombe (3, standing looking at camera, R/hand at bosom, L/arm at side)
 17. C do. (3, seated, open fan back of head, gloved R/hand on lap)
 18. C Lady Brook (H & S, looking at camera, single-strand necklace, bare head)
 19. C L. Houghton (W, looking R, necklace and locket, hair over shoulders)
 20. A Alice Butler (F, holding out ends of pleated skirt)
 21. C do. (F, seated looking up L, R/hand on lap)
 22. A Alice Butler (W, Amie Boyd (2, two girls embracing)
 23. C Miss Cameron (W, looking L, R/hand by neck, L/arm at side hand off picture)
 24. C do. (2, near R/profile, part of R/hand and L/arm off picture)
 25. C do. (2, looking front, fur wrap round neck, holding muff)
 26. C do. (2, standing l/profile, R/hand on circular hole in wall)
 27. C Violet Cameron (H & S, l/profile, necklace and locket) - as 3 (131), 4 (137)
 28. A Miss Violet Cameron (F, standing by rustic doorway) - as 543 in (11)
 29. C Campbell & Lane (two girls in theatre box looking R, bust and hair length)
 30. C do.
 31. A Miss Chamberlain (F, sitting on rock looking R, L/hand shading eyes)
 32. C Chevalier (W, looking at camera, hands at waist with closed fan)
 33. C Lady S. Churchill (W, looking at camera, bare head, hands not visible)
 34. C do. (2, looking L, bare head, hands together below waist)
 35. C Estelle Clayton (2, leaning back by shrub looking L, hands by head)
 36. C Mlle Conralet (F, descending stairs, open fan in R/hand held high)
 37. C Miss de Courcy (W, looking front, feather whisk in L/hand back of head)
 38. C Darly (W, R/profile, bare head, arms visible to elbows)
 39. C Beauville (F, standing looking at camera, holding rapier across body)
 40. C Madame Deoca (H & S, near R/profile, bare head, high-necked dress)
 41. C Marton Belorme (F, standing looking down at flowers in hands at bosom)
 42. A Georgie Demmon (F, seated, hands on lap)
 43. C Miss Dalin (W, l/profile, high-necked dress, hands just off picture)
 44. C Minnie Dupree (F, seated looking at camera, hands clasped at L/knee)
 45. A Cella Ellis (F, standing, hands together below waist)
 46. C do. (2, seated looking L above camera, hands on lap)
 7. A Eloise Sisters (F, two girls standing, one with hand on other's R/shoulder)
 48. C Miss Emerson (H & S, looking L, hat)
 49. C Miss Bragle (B, l/profile, tiara in hair, necklace with pendants)
 50. C Pablan (F, standing by urn on pillar, tambourine in R/hand against thigh)
 51. C Perrare (2, looking R, holding open fan across most of body)
 52. C Jules Perry (male, B, looking L, arms crossed, side-whiskers)
 53. C Miss Fortesque (2, looking L, R/hand shading eyes, dog seated on R)
 54. C French Beauty (H & S, near L/profile looking up, bare head)
 55. C do. (2, looking down L, L/hand on R/shoulder, white hat)
 56. C Miss Colet (2, standing looking L, hands below waist)
 57. C Gilbert (H & S, R/profile, semi-back view)
 58. C Miss Graham (H & S, 2-face to R looking upwards, bare head)
 59. C Grainer (F, standing looking L, open umbrella over L/shoulder)
 60. C William Gubb (B, looking R, l/hand at head, necklace, bare head)
 61. C do. (2, R/profile, leaning on arms on ledge, hat)
 62. C do. (F, standing looking R, hands below waist, hat)
 63. C Delcy Hall (2, standing in long grass looking up L, R/hand shading eyes)
 64. C do. (near F, standing, L/hand on rustic fence, R/hand beckoning)
 65. C May Hanley (B, R/profile, l/hand at chin, bare head)
 66. C Miss Hicks (2, looking front, jockey cap, holding whip across thighs)
 67. C Lilly Howard (F, standing looking L, hands above head, legs crossed)
 68. A Belle Howitt (F, seated, R/arm on ledge, L/hand on thighs, tights)
 69. C Sadie Hughes (B, looking L, R/hand across chest, bare head)
 70. C Miss Jackson (F, standing by arbutus, gloved L/hand adjusting hat)
 71. C Marie Jansen (H & S, 2-face to R, white headpiece)
 72. C do. (B, looking L, arms folded on ledge, bare head)
 73. C do. (near F, seated on wall leaning back, L/hand on wall)

L-1115

(232)

5. Fifth Set. (11) Unnumbered Cards (continued)

74. C Mrs. Jentry (F, standing looking front, L/hand on table, R/arm at side)
 75. C Mlle. Jeanie (2, standing looking front, staff with toy dog on top in L/hand)
 76. C Miss Leslie (near F, seated on pillar, L/leg over R/thigh, looking front)
 77. AC Lillie (F, seated on balustrade, cigarette in R/hand neck high)
 78. AC Miss Willis (F, seated on penny-farthing, R/hand on tray by wine glass)
 79. C do. (F, riding penny-farthing hands on handle-bars, looking front)
 80. C do. (F, seated on penny-farthing, R/hand on hip, L/hand on thigh)
 81. A Lillie Sisters (two girls on penny-farthings, one on R with R/foot off picture)
 82. A do. (two girls, one leaning against one seated on balustrade)
 83. C do. (two girls on penny-farthings hands touching above heads)
 84. C Mlle. Louise (2, R/profile, L/hand at neck, bare head)
 85. C Lady Londonderry (B, R/profile, hands clasped on chair back, necklace)
 86. C Lady Lonsdale (H & S, 2-face to L, bare head, earring in L/ear)
 87. C Zolie de Innesan (F, seated looking R, hands on left, hat)
 88. C Mrs. A. Maddick (2, standing R/profile, hands on wicker basket on table)
 89. C M. Mallard (F, seated looking L, L/hand at cheek, ballet dress)
 90. C Little Marjorie (H & S, looking at camera, L/hand behind hat)
 91. C De Marcy (H & S, looking R, five-strand choker necklace, bare head)
 92. C Sadie Martinet (2, standing looking L, hands at back)
 93. C Margaret Mather (2, standing looking L, hands at back, hat)
 94. C Mlle Jane May (2, seated near L/profile, R/hand by R/thigh, bare head)
 95. C Miss Rayne (F, seated on rock looking at camera, hands on lap)
 96. C Miss Mertens (W, looking at camera, R/hand on tambourine by head)
 97. C Milly Meyer (B, looking R, pendant earring in R/ear, white hat)
 98. C do. (2, standing looking at camera, arms at sides, hat)
 99. A Miss Miller (F, standing by curtain, hands head high)
 100. C Mdlle. Lailiana Miska (H & S, looking upwards, large hat)
 101. C Ida Mille (2, seated, R/hand holding out end of bonnet ribbon)
 102. C Mlle Myrma (H & S, l/profile, hand with coins in hair, open throat)
 103. C Miss Julia Mellison (H & S, looking R, ornamental comb in hair, necklace)
 104. C Nixon & Danville (two girls, F, one on R asleep below statue of cupid)
 105. C Oclama (H & S, l/profile, headpiece with coins)
 106. C Patti (B, 2-face to L, high-necked dress, bare head)
 107. C Mrs. Jas. Brown Foster (2, looking L, L/hand at bosom, R/arm at side)
 108. C Ethel Reed (F, standing by carved neoclassical looking front, L/hand at back)
 109. C Jennie Ricoci (F, standing looking R, R/hand on bosom, fan in L/hand at side)
 110. C Lady West Ridgeway (head and neck, R/profile, bare head)
 111. C M. Rimaldi (2, seated looking R, glove in R/hand on lap)
 112. C Miss Rose (H & S, R/profile, hat with white material down back of head)
 113. C William Russell (2, seated tying bonnet ribbon at neck) - as 771 in (1)
 114. C do.
 115. C Miss Ryanault (H & S, l/profile, dark hat and coat)
 116. AC Eva Schaler (F, seated on balustrade, L/elbow on pillar, R/hand on hip)
 117. A do. (F, seated on balustrade, hands on lap, R/leg over L/knee)
 118. C Grace Seavey (B, 2-face to L, R/arm across bosom hand on curtain, bare head)
 119. C do. (W, peeping round with R/hand on curtain)
 120. C do. (2, standing looking L, grass in L/hand, bill-hook in L/hand)
 121. C do. (F, standing looking down at R/hand on bank, hat in L/hand)
 122. C Ethel Selwyn (B, looking L, R/arm on table by head necklace, bare head)
 123. C Constance Seney (2, standing looking down L, hands on carved table)
 124. C Helen Standish (2, standing looking R, R/hand at side holding skirt)
 125. C Aida Stanley (B, looking L, hands together chest high, bonnet)
 126. C Lady Ida Stillwell (B, looking at camera, dog's head at L/base corner)
 127. C Jessie Story (H & S, back view R/profile, bare head)
 128. A Annie Summerville (F, standing looking L, arms at sides, hat)
 129. A do. (F, standing looking L, arms at sides, no hat)
 130. A Miss Sutherland (F, standing, L/hand on pillar, hat)

(233)

- 1. Fifth Set. (11) Unnumbered Cards (continued)
- 51. C Ray Templeton (P, standing holding material across face and covering most of body) - as 1 (112), 2 (118), 3 (77)
- 32. C Edithine Terriss (H & S, R/profile looking up, bare head)
- 33. C Ellen Perry (P, seated looking down R, hair loose over shoulders)
- 34. C Lydia Thompson (P, standing by small pillar looking R, L/hand on hip)
- 35. C Miss Riblebury (P, seated, near R/profile, hands clasped at knee)
- 36. C Miss Tresselt (B, looking at camera, bare head, open throat)
- 37. C Mr. J.L. Woolle (male, H & S, looking L, dotted tie)
- 38. C Kate Hart (P, standing looking R, holding rapier across thighs)
- 39. C Miss Kate Vaughan (B, facing L looking round to front, bare head)
- 40. C Kate Vaughan (P, looking L, holding equipment by R/shoulder)
- 41. C Vienna Beauty (B, looking at camera, hat, hands tying bow at throat)
- 42. C Maud Waldemere (B, looking R, hat) - Fig. Xc2/145-50
- 43. C Flora Walsh (P, sitting on rustic steps looking at flower in R/hand)
- 44. C do. (P, standing at opening in curtains, arms at sides, bonnet)
- 45. A Lizzie Webster (near P, seated looking L, R/hand on hip)
- 46. C Maud Wentworth (H & S, looking up R, finger of L/hand at chin, bare head)
- 47. C do. (P, seated looking R, playing banjo, bare head)
- 48. C Miss Williams (P, seated looking at camera, open fan in L/hand at waist)
- 49. C Miss Williamson (P, seated looking L, open fan in R/hand, L/hand on lap)
- 50. C Miss Woodworth (P, leaning on arms folded on chair) - as 1 (92), 2 (71)
- 51. C do. (P, seated looking at camera, hands on lap)
- 52. C Miss Young (W, L/profile looking upwards, L/arm across ledge)
- 53. A Zampa (P, standing looking at camera cover in L/hand)
- 54. A do. (P, standing looking at camera cover in L/hand)
- 55. C (no caption - H & S, P-face to L, flowers on hat, light hand at neck with bow at throat, dress with dark cross-piece on bosom)

2/146 PHOTOGRAPHIC CARDS - DUKE (A). Actresses and Celebrities, inscribed at base "Duke of Durham - The Best Smoking Tobacco - W. Duke, Sons & Co., Durham, N.C.", see Fig. Xc2/146. Duke Set D76-71. 43 known, in two sizes:

- (a) 72-75 x 43. Nos. 1/4, 6/16, 18/43 known.
 - (b) 90 x 60. Nos. 5 and 17 known.
- Cards inscribed at base "Duke's Mixture Smoking Tobacco..." are listed under Xc2/151A.
- 1. Anderson, M.C. Kan.
 - 2. Belle Archer and Sothorn
 - 3. Alice Arnold
 - 4. Helen Barcroft
 - 5. Barry, M.C. Miss.
 - 6. Saddle Begelew
 - 7. Edwin Booth
 - 8. Justice Bradley, U.S. Supreme Court
 - 9. Brewer, M.C. Mich.
 - 10. Campbell, M.C. Ohio
 - 11. Bettelle Clayton
 - 12. Crisp, M.C. Ga.
 - 13. Miss Deaves
 - 14. Dougherty, M.C. Fla.
 - 15. Sophie Dyce
 - 16. Bertha Fiebach
 - 17. Glass, M.C. Tenn. - Fig. Xc2/146
 - 18. Gibson, M.C. Ia.
 - 19. Senator Gray, Del.
 - 20. Lillian Grubb
 - 21. Senator Hale, Me.
 - 22. Hart, M.C. Texas
 - 23. Senator Ingalls, Kan.
 - 24. Joe Jefferson (Calab Plummer)
 - 25. Fanny Johnson
 - 26. Frankie Kemble
 - 27. Saddle Martnot
 - 28. James O'Neil
 - 29. Annie Pixley
 - 30. Fond Slaters
 - 31. Ada Behan
 - 32. Fanny Rice
 - 33. Lillian Russell
 - 34. Geraldine St. Maur
 - 35. Senator Sherman, Ohio
 - 36. Annie Sutherland
 - 37. Senator Teller, Col.
 - 38. Thompson, M.C. Ohio
 - 39. Queenie Trowbridge
 - 40. Vlas, P.M. General
 - 41. Lester Wallace
 - 42. White, M.C. Ind.
 - 43. Whitney, Sec. of Navy



DUKE OF DURHAM.
THE BEST SMOKING TOBACCO
W. DUKE, SONS & CO., DURHAM, N.C.
Fig. Xc2/146

- 1. Duke Set D76-81. Brand issues, with plain dark green back, except printing (d) which has plain white back. Without captions. About 750 seen. Duke's name appears at L/base of inset, but is scarcely legible on some cards.
- (a) Single inset at base, see No. 1 at Fig. Xc2/150. About 30 seen.
- (b) Two insets at base, see No. 2 at Fig. Xc2/150. About 30 seen. Duke's name appears at L/base of "planter" inset, as in (a).
- (c) "Smoke and Chew Honest Long Cut" at base, see No. 3 at Fig. Xc2/150. About 35 seen.
- (d) "Honest Long Cut" at base in style of No. 4 at Fig. Xc2/150. About 5 seen. Plain white back.
- (e) "Honest Long Cut" at base in style of No. 5 at Fig. Xc2/150. About 650 seen, including several portraits of John L. Sullivan, one of which is illustrated at No. 5 at Fig. Xc2/150.

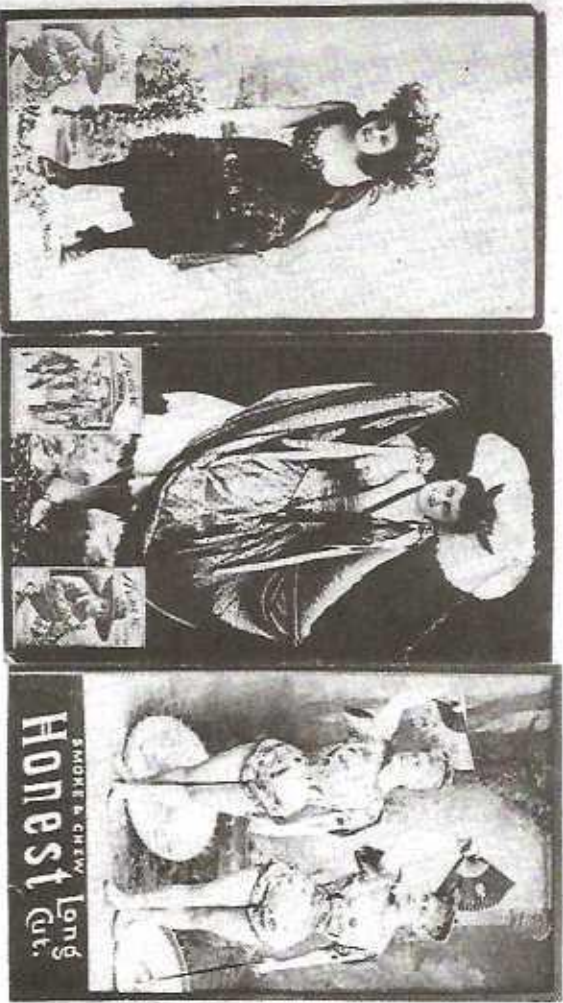


Fig. Xc2/150 (part)

- 2. Gail & HE Set G8-8-1. A few are similar to those in Duke Set D76-81, but the subjects are basically different, and are divided below into four groupings.
- 1. First Grouping. About 400 seen - 20 with caption "Carmenita", "Miss Cony" or "Lillian Russell", 380 without caption.
- A. No brand inscription at base, see No. 6 at Fig. Xc2/150. Two backs in black: (a) Headed: Smoke - and - Chew (in capital letters) Navy Tobacco, see No. 10 at Fig. Xc2/150. Depth of back wording 86 m/h. (b) Headed: Smoke and Chew Bob Link Long Cut, see No. 12 at Fig. Xc2/150. Back in black, as A (a).
- B. "G & A Navy Long Cut" at base, see No. 7 at Fig. Xc2/150.
- 2. Second Grouping. About 100 seen, without caption. "G & A Navy Long Cut" at base, see No. 7 at Fig. Xc2/150. Backs: (a) Plain dark green (b) Headed: Smoke and Chew (in upper and lower case letters) Navy Tobacco, see No. 11 at Fig. Xc2/150. Back in (A) black (B) blue. Depth of back wording 83 m/h.

Fifth Set, (11) Unnumbered Cards (continued)

11. C Fay Templeton (F, standing holding material across face and covering most of body) - as 1 (112), 2 (118), 3 (77)
12. C Ellaline Terriss (H & S, R/profile looking up, bare head)
13. C Ellen Terry (2, seated looking down R, hair loose over shoulders)
14. C Lydia Thompson (2, standing by small pillar looking R, L/hand on hip)
15. C Miss Pillsbury (2, seated, near R/profile, hands clasped at knee)
16. C Mlle. Tilsot (B, looking at camera, bare head, open throat)
17. C Mr. J. L. Toole (male, H & S, looking L, dotted tie)
18. C Kate Hart (F, standing looking R, holding rapier across thighs)
19. C Miss Kate Vaughan (B, facing L looking round to front, bare head)
20. C Kate Vaughan (2, looking L, holding squirrel by R/shoulder)
21. C Wynema Beauty (B, looking at camera, hat, hands tying bow at throat)
22. C Maud Waldemere (B, looking R, hat) - Fig. Xc2/145-50
23. C Flora Walsh (F, sitting on rustic steps looking at flower in R/hand)
24. C do. (F, standing at opening in curtains, arms at sides, bonnet)
25. A Lizzie Webster (near F, seated looking L, R/hand on hip)
16. C Maud Kentworth (H & S, looking up R, finger of L/hand at chin, bare head)
17. C do. (F, seated looking R, playing banjo, bare head)
18. C Miss Williams (2, seated looking at camera, open fan in R/hand at waist)
19. C Miss Williamson (2, seated looking L, open fan in R/hand, L/hand on lap)
30. C Miss Woodworth (2, leaning on arms folded on chair) - as 1 (92), 2 (71)
31. C do. (F, seated looking at camera, hands on lap)
32. C Miss Young (W, L/profile looking upwards, L/arm across ledge)
33. A Zampa (F, standing looking L, hands behind head)
34. A do. (F, standing looking at camera cover in L/hand)
35. C do. (H & S, 2-face to L, flowers on hat, light band at neck with bow at throat, dress with dark cross-piece on bosom)

2/146 PHOTOGRAPHIC CARDS - DUKE (A). Actresses and Celebrities, inscribed at base "Duke of Durham - The Best Smoking Tobacco - W. Duke, Sons & Co., Durham, N.C.", see Fig. Xc2/146. Duke Set D76-71, 43 known, in two sizes:

(a) 72-75 x 43. Nos. 1/4, 6/16, 18/43 known

(b) 90 x 60. Nos. 5 and 17 known.

1. Anderson, M.C., Kan.
2. Belle Archer and Sothern
3. Alice Arnold
4. Helen Danaroff
5. Barry, M.C., Miss.
6. Sadie Bogelow
7. Edwin Booth
8. Justice Beadley, U.S. Supreme Court
9. Brewer, M.C., Mich.
10. Campbell, M.C., Ohio
11. Estelle Clayton
12. Crisp, M.C., Ga.
13. Miss Deaves
14. Dougherty, M.C., Fla.
15. Sophie Byre
16. Bertha Fleisch
17. Claess, M.C., Tenn. - Fig. Xc2/146
18. Gibson, M.C., La.
19. Senator Gray, Del.
20. Lillian Grubb
21. Senator Hale, Me.



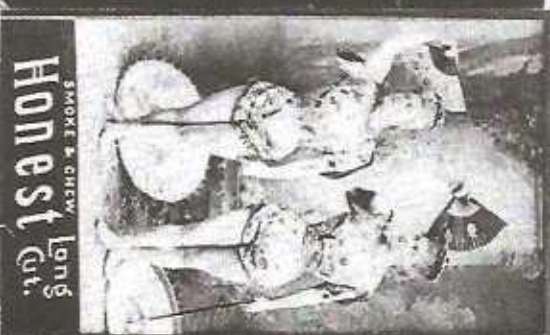
DUKE OF DURHAM
THE BEST SMOKING TOBACCO
W. DUKE, SONS & CO., DURHAM, N. C.

Fig. Xc2/146

22. Kere, M.C., Texas
23. Senator Ingalls, Kan.
24. Joe Jefferson (Caleb Plummer)
25. Fanny Johnston
26. Frankie Kemble
27. Sadie Martinot
28. James O'Neil
29. Annie Pixley
30. Pond Sisters
31. Ada Rehan
32. Fanny Rice
33. Lillian Russell
34. Geraldine St. Maur
35. Senator Sherman, Ohio
36. Annie Sutherland
37. Senator Teller, Col.
38. Thompson, M.C., Ohio
39. Queenie Trowbridge
40. Viles, P.H., General
41. Lester Wallace
42. White, M.C., Ind.
43. Whitney, Sec. of Navy

Dark brown borders. Size very variable, about 100-105 x 54-63.

1. Duke Set D76-91. Brand leaves, with plain dark green back, except printing (d) which has plain white back. Without captions. About 750 seen.
 - (a) Single inset at base, see No. 1 at Fig. Xc2/150. About 30 seen. Duke's name appears at L/base of inset, but is scarcely legible on some cards.
 - (b) Two insets at base, see No. 2 at Fig. Xc2/150. About 30 seen. Duke's name appears at L/base of "planator" inset, as in (a).
 - (c) "Smoke and Chew Honest Long Cut" at base, see No. 3 at Fig. Xc2/150. About 35 seen.
 - (d) "Honest Long Cut" at base in style of No. 4 at Fig. Xc2/150. About 5 seen. Plain white back.
 - (e) "Honest Long Cut" at base in style of No. 5 at Fig. Xc2/150. About 650 seen, including several portraits of John L. Sullivan, one of which is illustrated at No. 5 at Fig. Xc2/150.



1

Fig. Xc2/150 (part)

3

2. Gail & Ar Set C8-9-1. A few are similar to those in Duke Set D76-91, but the subjects are basically different, and are divided below into four groupings.

1. First Grouping. About 400 seen - 20 with caption "Carmenita", "Miss Cony" or "Lillian Russell", 390 without caption.

A. No brand inscription at base, see No. 6 at Fig. Xc2/150. Two backs in black: (a) Headed: Smoke - and - Chew (in capital letters) Navy Tobacco, see No. 10 at Fig. Xc2/150. Depth of back wording 86 m/m.

(b) Headed: Smoke and Chew Bob's Link Long Cut, see No. 12 at Fig. Xc2/150. Back in black, see A (a).

2. Second Grouping. About 100 seen, without caption. "G & A Navy Long Cut" at base, see No. 7 at Fig. Xc2/150. Backs:

(a) Plain dark green
 (b) Headed: Smoke and Chew (in upper and lower case letters) Navy Tobacco, see No. 11 at Fig. Xc2/150. Back in (A) black (B) blue. Depth of back wording 83 m/m.